

Anti-SIK1 antibody

| | |
|-----------------|---|
| Cat. No. | ml262280 |
| Package | 25 µl/100 µl/200 µl |
| Storage | -20°C, pH7.4 PBS, 0.05% NaN ₃ , 40% Glycerol |

Product overview

| | |
|---------------------|--------------------------------------|
| Description | Anti-SIK1 rabbit polyclonal antibody |
| Applications | ELISA, WB, IHC |
| Immunogen | Synthetic peptide of human SIK1 |
| Reactivity | Human, Mouse, Rat |
| Content | 0.8 mg/ml |
| Host species | Rabbit |
| Ig class | Immunogen-specific rabbit IgG |
| Purification | Antigen affinity purification |

Target information

| | |
|------------------|-------------------------|
| Symbol | SIK1 |
| Full name | salt-inducible kinase 1 |

Synonyms MSK; SIK; SNF1LK

Swissprot P57059

Target Background

SIK1 (salt-inducible kinase 1), also known as SNF1LK or MSK, is a 783 amino acid protein that contains one UBA domain and one protein kinase domain and belongs to the Ser/Thr protein kinase family. Localized to both the nucleus and the cytoplasm, SIK1 uses magnesium as a cofactor to catalyze the ATP-dependent phosphorylation of target proteins and is thought to be important for the early stages of skeletal muscle growth and myocardial cell differentiation. Additionally, SIK1 has a potential role in regulation of the G2/M cell cycle transition, as well as in inhibitory control of CREB protein function.

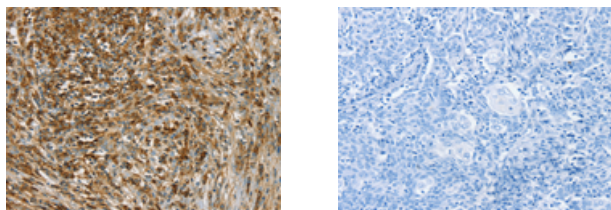
Applications

Immunohistochemistry

Predicted cell location: Cytoplasm or Nucleus

Positive control: Human cervical cancer

Recommended dilution: 25-100



The image on the left is immunohistochemistry of paraffin-embedded Human cervical cancer tissue using ml262280(SIK1 Antibody) at dilution 1/40, on the right is treated with synthetic peptide. (Original magnification: $\times 200$)

Western blotting

Predicted band size: 85 kDa

Positive control: HT-29 and hela cells, mouse liver tissue, A549 and Jurkat cells

Recommended dilution: 500-2000

Gel: 6%SDS-PAGE

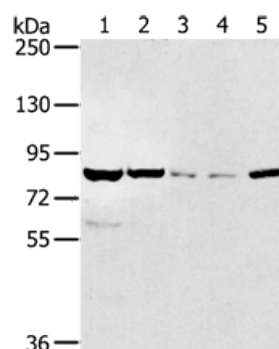
Lysate: 40 µg

Lane 1-5: HT29 cells, hela cells, mouse liver tissue, A549 cells, Jurkat cells

Primary antibody: ml262280(SIK1 Antibody) at dilution 1/250

Secondary antibody: Goat anti rabbit IgG at 1/8000 dilution

Exposure time: 10 seconds



ELISA

Recommended dilution: 1000-2000

联系电话: 4008-898-798, 021-61725725

联系QQ: 2881505695, 2881505696

邮箱: mlbio_cn@yeah.net

网址: www.mlbio.cn