

Anti-SSX5 antibody

| | |
|-----------------|---|
| Cat. No. | ml262308 |
| Package | 25 µl/100 µl/200 µl |
| Storage | -20°C, pH7.4 PBS, 0.05% NaN ₃ , 40% Glycerol |

Product overview

| | |
|---------------------|--------------------------------------|
| Description | Anti-SSX5 rabbit polyclonal antibody |
| Applications | ELISA, WB |
| Immunogen | Synthetic peptide of human SSX5 |
| Reactivity | Human |
| Content | 0.2 mg/ml |
| Host species | Rabbit |
| Ig class | Immunogen-specific rabbit IgG |
| Purification | Antigen affinity purification |

Target information

| | |
|------------------|----------------------------------|
| Symbol | SSX5 |
| Full name | synovial sarcoma, X breakpoint 5 |
| Synonyms | |
| Swissprot | O60225 |

Target Background

The product of this gene belongs to the family of highly homologous synovial sarcoma X (SSX) breakpoint proteins. These proteins may function as transcriptional repressors. They are also capable of eliciting spontaneous humoral and cellular immune responses in cancer patients, and are potentially useful targets in cancer vaccine-based immunotherapy. While some of the related SSX genes are involved in t(X;18)(p11.2;q11.2) translocations that are characteristically found in all synovial sarcomas, this gene does not appear to be involved in such translocations.

订购热线: 4008-898-798

Applications

Western blotting

Predicted band size: 22 kDa

Positive control: A431, Jurkat and Raji cells

Recommended dilution: 200-1000

Gel: 12% SDS-PAGE

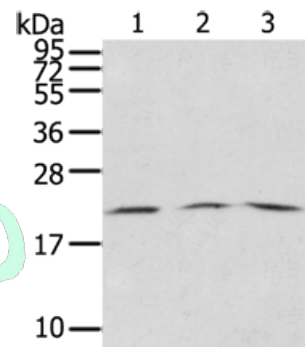
Lysate: 60 µg

Lane 1-3: A431 cells, Jurkat cells, Raji cells

Primary antibody: ml262308(SSX5 Antibody) at dilution 1/200

Secondary antibody: Goat anti rabbit IgG at 1/8000 dilution

Exposure time: 30 seconds



ELISA

Recommended dilution: 1000-2000

联系电话: 4008-898-798, 021-61725725

联系QQ: 2881505695, 2881505696

邮箱: mlbio_cn@yeah.net

网址: www.mlbio.cn