

Anti-TAP2 antibody

Cat. No.	ml262339
Package	25 µl/100 µl/200 µl
Storage	-20°C, pH7.4 PBS, 0.05% NaN ₃ , 40% Glycerol

Product overview

Description	Anti-TAP2 rabbit polyclonal antibody
Applications	ELISA, WB
Immunogen	Synthetic peptide of human TAP2
Reactivity	Human, Mouse, Rat
Content	0.5 mg/ml
Host species	Rabbit
Ig class	Immunogen-specific rabbit IgG
Purification	Antigen affinity purification

Target information

Symbol	TAP2
Full name	transporter 2, ATP-binding cassette, sub-family B (MDR/TAP)
Synonyms	APT2; PSF2; ABC18; ABCB3; PSF-2; RING11; D6S217E
Swissprot	Q03519

Target Background

The membrane-associated protein encoded by this gene is a member of the superfamily of ATP-binding cassette (ABC) transporters. ABC proteins transport various molecules across extra- and intra-cellular membranes. ABC genes are divided into seven distinct subfamilies (ABC1, MDR/TAP, MRP, ALD, OABP, GCN20, White). This protein is a member of the MDR/TAP subfamily. Members of the MDR/TAP subfamily are involved in multidrug resistance. This gene is located 7 kb telomeric to gene family member ABCB2.

订购热线: 4008-898-798

Applications

Western blotting

Predicted band size: 76 kDa

Positive control: Jurkat cells

Recommended dilution: 200-1000

Gel: 6%SDS-PAGE

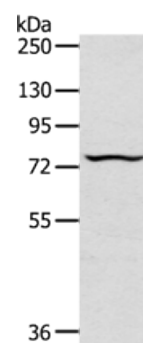
Lysate: 40 µg

Lane: Jurkat cells

Primary antibody: ml262339(TAP2 Antibody) at dilution 1/200

Secondary antibody: Goat anti rabbit IgG at 1/8000 dilution

Exposure time: 30 seconds



ELISA

Recommended dilution: 1000-2000

联系电话: 4008-898-798, 021-61725725

联系QQ: 2881505695, 2881505696

邮箱: mlbio_cn@yeah.net

网址: www.mlbio.cn