

## Anti-THAP3 antibody

<b>Cat. No.</b>	ml262354
<b>Package</b>	25 µl/100 µl/200 µl
<b>Storage</b>	-20°C, pH7.4 PBS, 0.05% NaN <sub>3</sub> , 40% Glycerol

### Product overview

<b>Description</b>	Anti-THAP3 rabbit polyclonal antibody
<b>Applications</b>	ELISA, WB, IHC
<b>Immunogen</b>	Synthetic peptide of human THAP3
<b>Reactivity</b>	Human
<b>Content</b>	0.7 mg/ml
<b>Host species</b>	Rabbit
<b>Ig class</b>	Immunogen-specific rabbit IgG
<b>Purification</b>	Antigen affinity purification

### Target information

<b>Symbol</b>	THAP3
<b>Full name</b>	THAP domain containing, apoptosis associated protein 3

#### Synonyms

Swissprot Q8WTV1

#### Target Background

THAP3 (THAP domain-containing protein 3) is a 239 amino acid protein that contains one THAP-type zinc finger and exists as three alternatively spliced isoforms. The gene that encodes THAP3 contains roughly 10,721 bases and maps to human chromosome 1p36.31. Spanning about 260 million base pairs and comprising nearly 8% of the human genome, chromosome 1 is the largest human chromosome.

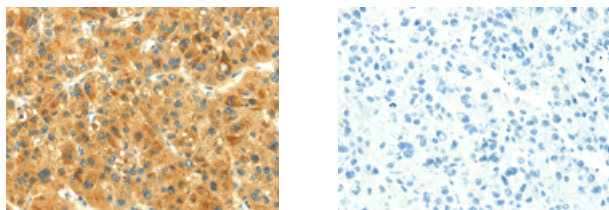
## Applications

### Immunohistochemistry

Predicted cell location: Cytoplasm

Positive control: Human liver cancer

Recommended dilution: 25-100



The image on the left is immunohistochemistry of paraffin-embedded Human liver cancer tissue using ml262354(THAP3 Antibody) at dilution 1/30, on the right is treated with synthetic peptide. (Original magnification:  $\times 200$ )

### Western blotting

Predicted band size: 27 kDa

Positive control: 231 cells

Recommended dilution: 500-2000

Gel: 12%SDS-PAGE

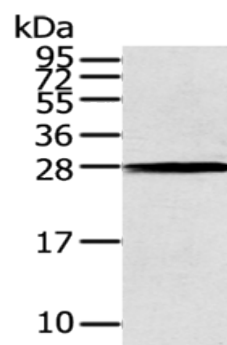
Lysate: 40  $\mu$ g

Lane: 231 cells

Primary antibody: ml262354(THAP3 Antibody) at dilution 1/200

Secondary antibody: Goat anti rabbit IgG at 1/8000 dilution

Exposure time: 30 seconds



#### ELISA

Recommended dilution: 2000-5000

联系电话: 4008-898-798, 021-61725725

联系QQ: 2881505695, 2881505696

邮箱: [mlbio\\_cn@yeah.net](mailto:mlbio_cn@yeah.net)

网址: [www.mlbio.cn](http://www.mlbio.cn)