

## Anti-TRIM35 antibody

<b>Cat. No.</b>	ml262368
<b>Package</b>	25 µl/100 µl/200 µl
<b>Storage</b>	-20°C, pH7.4 PBS, 0.05% NaN <sub>3</sub> , 40% Glycerol

### Product overview

<b>Description</b>	Anti-TRIM35 rabbit polyclonal antibody
<b>Applications</b>	ELISA, WB, IHC
<b>Immunogen</b>	Synthetic peptide of human TRIM35
<b>Reactivity</b>	Human
<b>Content</b>	0.8 mg/ml
<b>Host species</b>	Rabbit
<b>Ig class</b>	Immunogen-specific rabbit IgG
<b>Purification</b>	Antigen affinity purification

### Target information

<b>Symbol</b>	TRIM35
<b>Full name</b>	tripartite motif containing 35

**Synonyms** HLS5; MAIR

**Swissprot** Q9UPQ4

#### **Target Background**

The protein encoded by this gene is a member of the tripartite motif (TRIM) family. The TRIM motif includes three zinc-binding domains, a RING, a B-box type 1 and a B-box type 2, and a coiled-coil region. The function of this protein has not been identified.

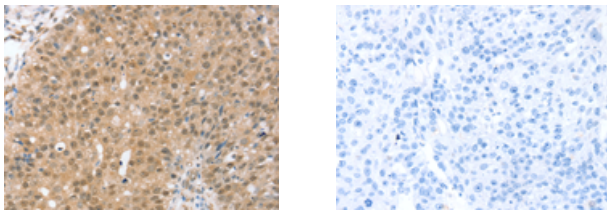
## Applications

### Immunohistochemistry

Predicted cell location: Nucleus and Cytoplasm

Positive control: Human breast cancer

Recommended dilution: 25-100



The image on the left is immunohistochemistry of paraffin-embedded Human breast cancer tissue using ml262368(TRIM35 Antibody) at dilution 1/35, on the right is treated with synthetic peptide. (Original magnification: ×200)

### Western blotting

Predicted band size: 57 kDa

Positive control: A375 cells and human fetal muscle tissue

Recommended dilution: 200-1000

Gel: 8%SDS-PAGE

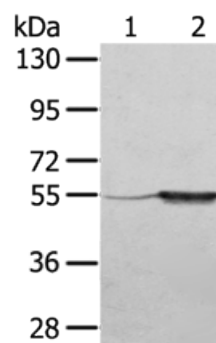
Lysate: 40 µg

Lane 1-2: A375 cells, human fetal muscle tissue

Primary antibody: ml262368(TRIM35 Antibody) at dilution 1/550

Secondary antibody: Goat anti rabbit IgG at 1/8000 dilution

Exposure time: 5 seconds



## ELISA

Recommended dilution: 1000-2000

联系电话: 4008-898-798, 021-61725725

联系QQ: 2881505695, 2881505696

邮箱: [mlbio\\_cn@yeah.net](mailto:mlbio_cn@yeah.net)

网址: [www.mlbio.cn](http://www.mlbio.cn)