

Anti-TRIM62 antibody

Cat. No.	ml262370
Package	25 µl/100 µl/200 µl
Storage	-20°C, pH7.4 PBS, 0.05% NaN ₃ , 40% Glycerol

Product overview

Description	Anti-TRIM62 rabbit polyclonal antibody
Applications	ELISA, WB, IHC
Immunogen	Synthetic peptide of human TRIM62
Reactivity	Human
Content	0.2 mg/ml
Host species	Rabbit
Ig class	Immunogen-specific rabbit IgG
Purification	Antigen affinity purification

Target information

Symbol	TRIM62
Full name	tripartite motif containing 62

Synonyms DEAR1

Swissprot Q9BVG3

Target Background

TRIM62 (tripartite motif-containing 62) is a 475 amino acid protein that belongs to the TRIM/RBCC (Ring finger, B box, coiled-coil) family. TRIM62 contains one B box-type zinc finger, one SPRY domain and one RING-type zinc finger; a motif that has zinc-chelating activity and is involved in mediating protein-protein and protein-DNA interactions. As a member of the TRIM/RBCC family, TRIM62 may function in transcriptional regulation, cell transformation and carcinogenesis. In addition, TRIM62 expression can affect the entry of murine leukemia virus (MLV) and human immunodeficiency virus 1 (HIV).

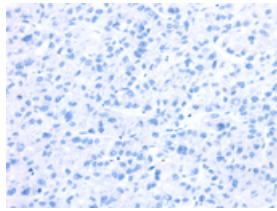
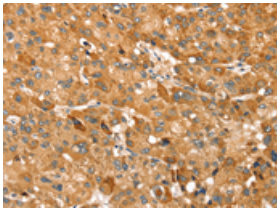
Applications

Immunohistochemistry

Predicted cell location: Cytoplasm

Positive control: Human liver cancer

Recommended dilution: 25-100

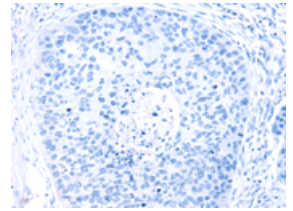
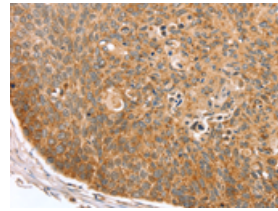


The image on the left is immunohistochemistry of paraffin-embedded Human liver cancer tissue using ml262370(TRIM62 Antibody) at dilution 1/30, on the right is treated with synthetic peptide. (Original magnification: $\times 200$)

Predicted cell location: Cytoplasm

Positive control: Human esophagus cancer

Recommended dilution: 25-100



The image on the left is immunohistochemistry of paraffin-embedded Human esophagus cancer tissue using ml262370(TRIM62 Antibody) at dilution 1/30, on the right is treated with synthetic peptide. (Original magnification: $\times 200$)

Western blotting

Predicted band size: 54 kDa

Positive control: 231 and hepg2 cells

Recommended dilution: 500-2000

订购热线: 4008-898-798

Gel: 8%SDS-PAGE

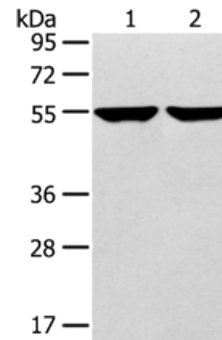
Lysate: 40 μ g

Lane 1-2: 231 cells, hepg2 cells

Primary antibody: ml262370(TRIM62 Antibody) at dilution 1/400

Secondary antibody: Goat anti rabbit IgG at 1/8000 dilution

Exposure time: 1 minute



ELISA

Recommended dilution: 2000-5000

联系电话: 4008-898-798, 021-61725725

联系QQ: 2881505695, 2881505696

邮箱: mlbio_cn@yeah.net

网址: www.mlbio.cn