

Anti-TMPRSS11F antibody

Cat. No.	ml262381
Package	25 µl/100 µl/200 µl
Storage	-20°C, pH7.4 PBS, 0.05% NaN ₃ , 40% Glycerol

Product overview

Description	Anti-TMPRSS11F rabbit polyclonal antibody
Applications	ELISA, WB
Immunogen	Synthetic peptide of human TMPRSS11F
Reactivity	Human, Mouse
Content	0.3 mg/ml
Host species	Rabbit
Ig class	Immunogen-specific rabbit IgG
Purification	Antigen affinity purification

Target information

Symbol	TMPRSS11F
Full name	transmembrane protease, serine 11F
Synonyms	
Swissprot	Q6ZWK6

Target Background

TMPRSS11F is a type-II transmembrane protease, similar to hepsin (TMPRSS1). TMPRSS11F is a member of a larger family of membrane attached serine proteases, a poorly defined group that includes TMPRSS11A, B, C, D, E, F, Hepsin, Corin, Matriptase-1, 2 and 3. TMPRSS11F has a domain structure of an aminoterminal cytoplasmic domain, followed by a transmembrane domain, a SEA domain (Sea urchin sperm protein, Enterokinase, Agrin), a short spacer, then the trypsin-like serine protease domain. The SEA domain is thought to play a role in carbohydrate binding in the analogous protein sequences where it is found, but its role in TMPRSS11F is unclear. The cleavage of the Arg206-Ile207 bond is thought to liberate the catalytic domain.

订购热线: 4008-898-798

Applications

Western blotting

Predicted band size: 49 kDa

Positive control: Human esophagus and thyroid cancer tissue

Recommended dilution: 200-1000

Gel: 8%SDS-PAGE

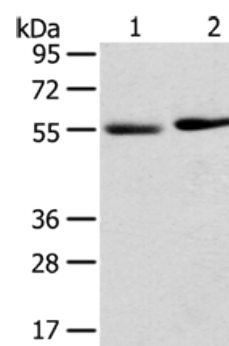
Lysate: 40 µg

Lane 1-2: Human esophagus tissue, Human thyroid cancer tissue

Primary antibody: ml262381(TMPRSS11F Antibody) at dilution 1/350

Secondary antibody: Goat anti rabbit IgG at 1/8000 dilution

Exposure time: 2 minutes



ELISA

Recommended dilution: 1000-2000

联系电话: 4008-898-798, 021-61725725

联系QQ: 2881505695, 2881505696

邮箱: mlbio_cn@yeah.net

网址: www.mlbio.cn