

## Anti-TP53I11 antibody

|                 |   |
|-----------------|---|
| <b>Cat. No.</b> | ml262395  |
| <b>Package</b>  | 25 µl/100 µl/200 µl                                     |
| <b>Storage</b>  | -20°C, pH7.4 PBS, 0.05% NaN <sub>3</sub> , 40% Glycerol |

### Product overview

|                     |   |
|---------------------|---|
| <b>Description</b>  | Anti-TP53I11 rabbit polyclonal antibody |
| <b>Applications</b> | ELISA, WB, IHC                          |
| <b>Immunogen</b>    | Synthetic peptide of human TP53I11      |
| <b>Reactivity</b>   | Human, Mouse, Rat                       |
| <b>Content</b>      | 0.7 mg/ml                               |
| <b>Host species</b> | Rabbit                                  |
| <b>Ig class</b>     | Immunogen-specific rabbit IgG           |
| <b>Purification</b> | Antigen affinity purification           |

### Target information

|                  |  |
|------------------|--|
| <b>Symbol</b>    | TP53I11                                |
| <b>Full name</b> | tumor protein p53 inducible protein 11 |

**Synonyms** PIG11

**Swissprot** O14683

#### **Target Background**

TP53I11 is a 177 amino acid tumor suppressor belonging to the p53-induced protein gene (PIG) family. The PIG gene family encodes redox-controlling proteins that are involved in p53 tumor suppressor activity. It is suggested that PIG11 is involved in arsenic trioxide As(2)O(3)-induced apoptosis in certain cell lines and may play a significant role in tumor suppression through promotion of cell apoptosis. The gene encoding PIG11 maps to human chromosome 11, which houses over 1,400 genes and comprises nearly 4% of the human genome.

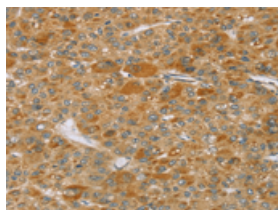
## Applications

### Immunohistochemistry

Predicted cell location: Cytoplasm

Positive control: Human liver cancer

Recommended dilution: 25-100

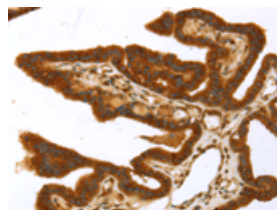


The image on the left is immunohistochemistry of paraffin-embedded Human liver cancer tissue using ml262395(TP53I11 Antibody) at dilution 1/40, on the right is treated with synthetic peptide. (Original magnification:  $\times 200$ )

Predicted cell location: Cytoplasm

Positive control: Human thyroid cancer

Recommended dilution: 25-100



The image on the left is immunohistochemistry of paraffin-embedded Human thyroid cancer tissue using ml262395(TP53I11 Antibody) at dilution 1/40, on the right is treated with synthetic peptide. (Original magnification:  $\times 200$ )

### Western blotting

Predicted band size: 21 kDa

Positive control: Jurkat cells

Recommended dilution: 500-2000

Gel: 8%SDS-PAGE

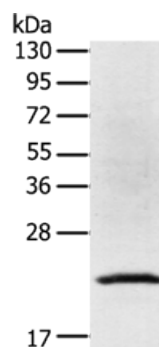
Lysate: 40 µg

Lane: Jurkat cells

Primary antibody: ml262395(TP53I11 Antibody) at dilution 1/400

Secondary antibody: Goat anti rabbit IgG at 1/8000 dilution

Exposure time: 1 second



## ELISA

Recommended dilution: 2000-5000

联系电话: 4008-898-798, 021-61725725

联系QQ: 2881505695, 2881505696

邮箱: [mlbio\\_cn@yeah.net](mailto:mlbio_cn@yeah.net)

网址: [www.mlbio.cn](http://www.mlbio.cn)