

Anti-MED13 antibody

Cat. No.	ml262408
Package	25 µl/100 µl/200 µl
Storage	-20°C, pH7.4 PBS, 0.05% NaN ₃ , 40% Glycerol

Product overview

Description	Anti-MED13 rabbit polyclonal antibody
Applications	ELISA, WB
Immunogen	Synthetic peptide of human MED13
Reactivity	Human, Mouse
Content	0.5 mg/ml
Host species	Rabbit
Ig class	Immunogen-specific rabbit IgG
Purification	Antigen affinity purification

Target information

Symbol	MED13
Full name	mediator complex subunit 13
Synonyms	ARC250; THRAP1; DRIP250; HSPC221; TRAP240
Swissprot	Q9UHV7

Target Background

This gene encodes a component of the mediator complex (also known as TRAP, SMCC, DRIP, or ARC), a transcriptional coactivator complex thought to be required for the expression of almost all genes. The mediator complex is recruited by transcriptional activators or nuclear receptors to induce gene expression, possibly by interacting with RNA polymerase II and promoting the formation of a transcriptional pre-initiation complex.

订购热线: 4008-898-798

Applications

Western blotting

Predicted band size: 239 kDa

Positive control: K562 cells

Recommended dilution: 500-2000

Gel: 6% SDS-PAGE

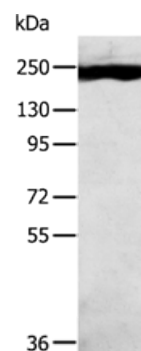
Lysate: 40 µg

Lane: K562 cells

Primary antibody: ml262408 (MED13 Antibody) at dilution 1/300

Secondary antibody: Goat anti rabbit IgG at 1/8000 dilution

Exposure time: 10 minutes



ELISA

Recommended dilution: 2000-5000

联系电话: 4008-898-798, 021-61725725

联系QQ: 2881505695, 2881505696

邮箱: mlbio_cn@yeah.net

网址: www.mlbio.cn