

## Anti-ERP44 antibody

<b>Cat. No.</b>	ml262437
<b>Package</b>	25 µl/100 µl/200 µl
<b>Storage</b>	-20°C, pH7.4 PBS, 0.05% NaN <sub>3</sub> , 40% Glycerol

### Product overview

<b>Description</b>	Anti-ERP44 rabbit polyclonal antibody
<b>Applications</b>	ELISA, WB, IHC
<b>Immunogen</b>	Synthetic peptide of human ERP44
<b>Reactivity</b>	Human, Mouse
<b>Content</b>	0.3 mg/ml
<b>Host species</b>	Rabbit
<b>Ig class</b>	Immunogen-specific rabbit IgG
<b>Purification</b>	Antigen affinity purification

### Target information

<b>Symbol</b>	ERP44
<b>Full name</b>	endoplasmic reticulum protein 44

**Synonyms** PDIA10; TXNDC4

**Swissprot** Q9BS26

#### **Target Background**

ERP44 is a 406 amino acid protein that contains one thioredoxin domain, a motif that participates in various redox reactions throughout the cell. Localized to the lumen of the endoplasmic reticulum (ER), TXNDC4 functions to inhibit the activity of IP3R-I (inositol 1,4,5-triphosphate receptor, type 1) within calcium channels. In addition, TXNDC4 is thought to regulate oxidative protein folding within the ER and may be involved in retaining proteins.

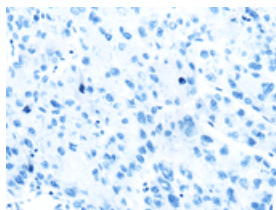
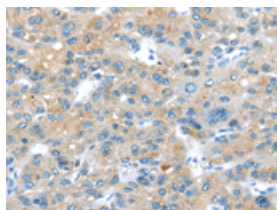
## Applications

### Immunohistochemistry

Predicted cell location: Cytoplasm

Positive control: Human liver cancer

Recommended dilution: 25-100

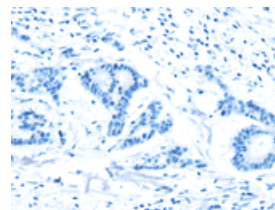
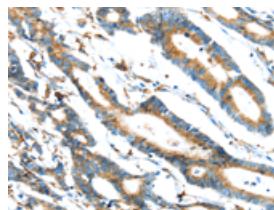


The image on the left is immunohistochemistry of paraffin-embedded Human liver cancer tissue using ml262437(ERP44 Antibody) at dilution 1/20, on the right is treated with synthetic peptide. (Original magnification:  $\times 200$ )

Predicted cell location: Cytoplasm

Positive control: Human colorectal cancer

Recommended dilution: 25-100



The image on the left is immunohistochemistry of paraffin-embedded Human colorectal cancer tissue using ml262437(ERP44 Antibody) at dilution 1/20, on the right is treated with synthetic peptide. (Original magnification:  $\times 200$ )

### Western blotting

Predicted band size: 47 kDa

Positive control: A431, K562, 231, HepG2, Hela, A549 and Raji cells

Recommended dilution: 500-2000

Gel: 8%SDS-PAGE

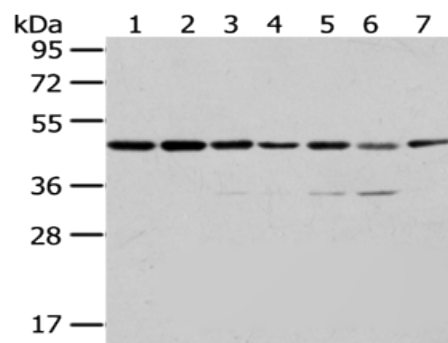
Lysate: 40 µg

Lane 1-7: A431 cells, K562 cells, 231 cells, HepG2 cells, Hela cells, A549 cells, Raji cells

Primary antibody: ml262437(ERP44 Antibody) at dilution 1/200

Secondary antibody: Goat anti rabbit IgG at 1/8000 dilution

Exposure time: 10 seconds



## ELISA

Recommended dilution: 2000-5000

联系电话: 4008-898-798, 021-61725725

联系QQ: 2881505695, 2881505696

邮箱: [mlbio\\_cn@yeah.net](mailto:mlbio_cn@yeah.net)

网址: [www.mlbio.cn](http://www.mlbio.cn)