

## Anti-VAMP2 antibody

<b>Cat. No.</b>	ml262474
<b>Package</b>	25 µl/100 µl/200 µl
<b>Storage</b>	-20°C, pH7.4 PBS, 0.05% NaN <sub>3</sub> , 40% Glycerol

### Product overview

<b>Description</b>	Anti-VAMP2 rabbit polyclonal antibody
<b>Applications</b>	ELISA, WB, IHC
<b>Immunogen</b>	Synthetic peptide of human VAMP2
<b>Reactivity</b>	Human, Mouse, Rat
<b>Content</b>	0.3 mg/ml
<b>Host species</b>	Rabbit
<b>Ig class</b>	Immunogen-specific rabbit IgG
<b>Purification</b>	Antigen affinity purification

### Target information

<b>Symbol</b>	VAMP2
<b>Full name</b>	vesicle-associated membrane protein 2 (synaptobrevin 2)

**Synonyms** SYB2; VAMP-2

**Swissprot** P63027

#### **Target Background**

The protein encoded by this gene is a member of the vesicle-associated membrane protein (VAMP)/synaptobrevin family. Synaptobrevins/VAMPs, syntaxins, and the 25-kD synaptosomal-associated protein SNAP25 are the main components of a protein complex involved in the docking and/or fusion of synaptic vesicles with the presynaptic membrane. This gene is thought to participate in neurotransmitter release at a step between docking and fusion. The protein forms a stable complex with syntaxin, synaptosomal-associated protein, 25 kD, and synaptotagmin. It also forms a distinct complex with synaptophysin. It is a likely candidate gene for familial infantile myasthenia (FIMG) because of its map location and because it encodes a synaptic vesicle protein of the type that has been implicated in the pathogenesis of FIMG.

## Applications

### Immunohistochemistry

Predicted cell location: Cytoplasm

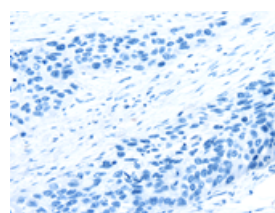
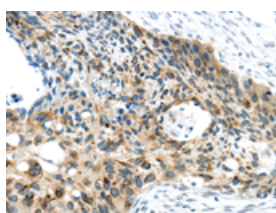
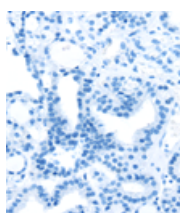
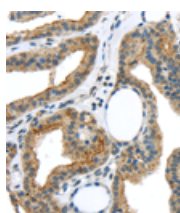
Predicted cell location: Cytoplasm

Positive control: Human thyroid cancer

Positive control: Human esophagus cancer

Recommended dilution: 25-100

Recommended dilution: 25-100



The image on the left is immunohistochemistry of paraffin-embedded Human thyroid cancer tissue using ml262474(VAMP2 Antibody) at dilution 1/40, on the right is treated with synthetic peptide. (Original magnification:  $\times 200$ )

The image on the left is immunohistochemistry of paraffin-embedded Human esophagus cancer tissue using ml262474(VAMP2 Antibody) at dilution 1/40, on the right is treated with synthetic peptide. (Original magnification:  $\times 200$ )

### Western blotting

Predicted band size: 13 kDa

Positive control: A172, Jurkat and Hela cells, Mouse brain and Human fetal brain tissue

Recommended dilution: 500-2000

订购热线: 4008-898-798

Gel: 12%SDS-PAGE

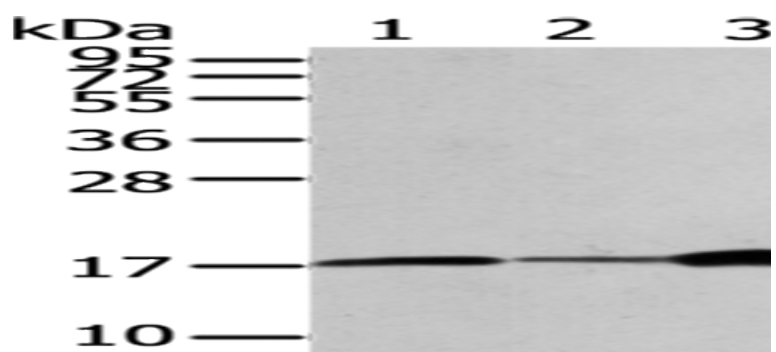
Lysate: 40 µg

Lane 1-5: A172 cells, Jurkat cells, Hela cells, Mouse  
brain tissue, Human fetal brain tissue

Primary antibody: ml262474(VAMP2 Antibody) at  
dilution 1/200

Secondary antibody: Goat anti rabbit IgG at 1/8000  
dilution

Exposure time: 30 seconds



## ELISA

Recommended dilution: 2000-5000

联系电话: 4008-898-798, 021-61725725

联系QQ: 2881505695, 2881505696

邮箱: [mlbio\\_cn@yeah.net](mailto:mlbio_cn@yeah.net)

网址: [www.mlbio.cn](http://www.mlbio.cn)