

Anti-VPS4A antibody

| | |
|-----------------|---|
| Cat. No. | ml262482 |
| Package | 25 µl/100 µl/200 µl |
| Storage | -20°C, pH7.4 PBS, 0.05% NaN ₃ , 40% Glycerol |

Product overview

| | |
|---------------------|---------------------------------------|
| Description | Anti-VPS4A rabbit polyclonal antibody |
| Applications | ELISA, WB, IHC |
| Immunogen | Synthetic peptide of human VPS4A |
| Reactivity | Human, Mouse, Rat |
| Content | 0.5 mg/ml |
| Host species | Rabbit |
| Ig class | Immunogen-specific rabbit IgG |
| Purification | Antigen affinity purification |

Target information

| | |
|------------------|--|
| Symbol | VPS4A |
| Full name | vacuolar protein sorting 4 homolog A (S. cerevisiae) |

Synonyms SKD1; SKD2; VPS4; SKD1A; VPS4-1

Swissprot Q9UN37

Target Background

The protein encoded by this gene is a member of the AAA protein family (ATPases associated with diverse cellular activities), and is the homolog of the yeast Vps4 protein. In humans, two paralogs of the yeast protein have been identified. The former share a high degree of aa sequence similarity with each other, and also with yeast Vps4 and mouse Skd1 proteins. The mouse Skd1 (suppressor of K⁺ transport defect 1) has been shown to be really an yeast Vps4 ortholog. Functional studies indicate that both human paralogs associate with the endosomal compartments, and are involved in intracellular protein trafficking, similar to Vps4 protein in yeast. The gene encoding this paralog has been mapped to chromosome 16; the gene for the other resides on chromosome 18.

Applications

Immunohistochemistry

Predicted cell location: Cytoplasm and
Cell membrane

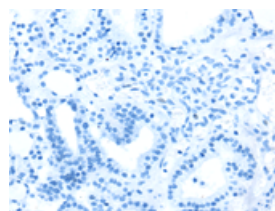
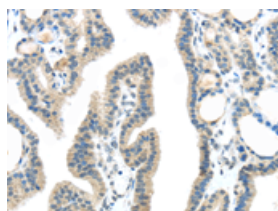
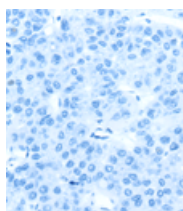
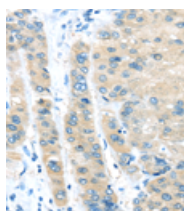
Positive control: Human liver cancer

Recommended dilution: 25-100

Predicted cell location: Cytoplasm and Cell membrane

Positive control: Human thyroid cancer

Recommended dilution: 25-100



The image on the left is immunohistochemistry of paraffin-embedded Human liver cancer tissue using ml262482(VPS4A Antibody) at dilution 1/25, on the right is treated with synthetic peptide. (Original magnification: $\times 200$)

The image on the left is immunohistochemistry of paraffin-embedded Human thyroid cancer tissue using ml262482(VPS4A Antibody) at dilution 1/25, on the right is treated with synthetic peptide. (Original magnification: $\times 200$)

Western blotting

Predicted band size: 49 kDa

Positive control: Human liver cancer tissue and 293T cells, A172, Hela and MCF7 cells

Recommended dilution: 500-2000

订购热线: 4008-898-798

Gel: 8%SDS-PAGE

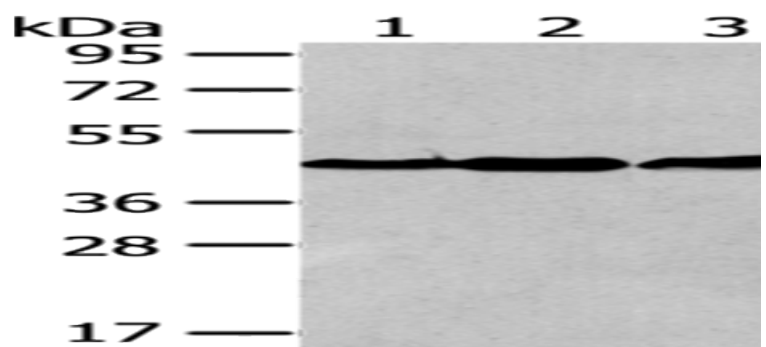
Lysate: 40 µg

Lane 1-5: Human liver cancer tissue, 293T cells, A172 cells, Hela cells, MCF7 cells

Primary antibody: ml262482(VPS4A Antibody) at dilution 1/200

Secondary antibody: Goat anti rabbit IgG at 1/8000 dilution

Exposure time: 1 minute



ELISA

Recommended dilution: 2000-5000

联系电话: 4008-898-798, 021-61725725

联系QQ: 2881505695, 2881505696

邮箱: mlbio_cn@yeah.net

网址: www.mlbio.cn