

## Anti-WNK2 antibody

<b>Cat. No.</b>	ml262500
<b>Package</b>	25 µl/100 µl/200 µl
<b>Storage</b>	-20°C, pH7.4 PBS, 0.05% NaN <sub>3</sub> , 40% Glycerol

### Product overview

<b>Description</b>	Anti-WNK2 rabbit polyclonal antibody
<b>Applications</b>	ELISA, WB, IHC
<b>Immunogen</b>	Synthetic peptide of human WNK2
<b>Reactivity</b>	Human, Mouse
<b>Content</b>	1.5 mg/ml
<b>Host species</b>	Rabbit
<b>Ig class</b>	Immunogen-specific rabbit IgG
<b>Purification</b>	Antigen affinity purification

### Target information

<b>Symbol</b>	WNK2
<b>Full name</b>	WNK lysine deficient protein kinase 2

**Synonyms** PRKWNK2; NY-CO-43; SDCCAG43; P/OKcl.13

**Swissprot** Q9Y3S1

#### **Target Background**

The protein encoded by this gene is a cytoplasmic serine-threonine kinase that belongs to the protein kinase superfamily. The protein plays an important role in the regulation of electrolyte homeostasis, cell signaling survival, and proliferation. Alternative splicing results in multiple transcript variants.

## Applications

### Immunohistochemistry

Predicted cell location: Cytoplasm

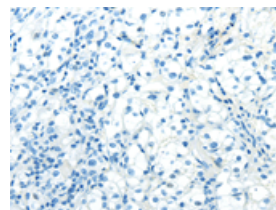
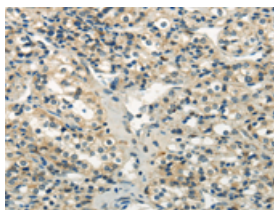
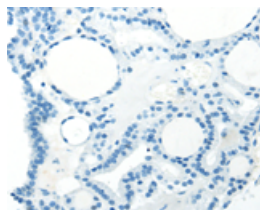
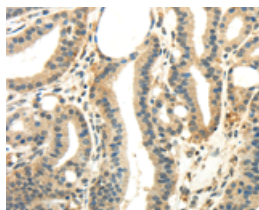
Predicted cell location: Cytoplasm

Positive control: Human thyroid cancer

Positive control: Human prostate cancer

Recommended dilution: 25-100

Recommended dilution: 25-100



The image on the left is immunohistochemistry of paraffin-embedded Human thyroid cancer tissue using ml262500(WNK2 Antibody) at dilution 1/35, on the right is treated with synthetic peptide. (Original magnification: ×200)

The image on the left is immunohistochemistry of paraffin-embedded Human prostate cancer tissue using ml262500(WNK2 Antibody) at dilution 1/35, on the right is treated with synthetic peptide. (Original magnification: ×200)

### Western blotting

Predicted band size: 243 kDa

Positive control: A431 and MCF7 cells

Recommended dilution: 200-1000

Gel: 6%SDS-PAGE

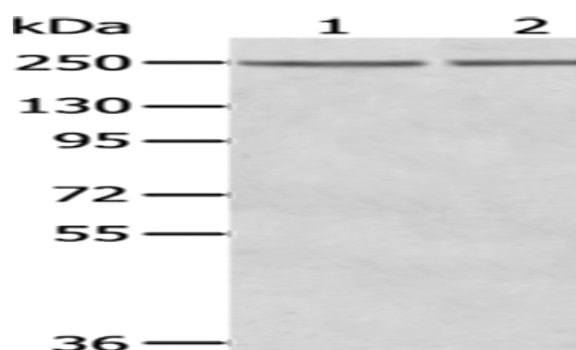
Lysate: 40  $\mu$ g

Lane 1-2: A431 cells, MCF7 cells

Primary antibody: ml262500(WNK2 Antibody) at dilution 1/200

Secondary antibody: Goat anti rabbit IgG at 1/8000 dilution

Exposure time: 3 minutes



## ELISA

Recommended dilution: 1000-2000

联系电话: 4008-898-798, 021-61725725

联系QQ: 2881505695, 2881505696

邮箱: [mlbio\\_cn@yeah.net](mailto:mlbio_cn@yeah.net)

网址: [www.mlbio.cn](http://www.mlbio.cn)