

Anti-RHOU antibody

| | |
|-----------------|---|
| Cat. No. | ml262614 |
| Package | 25 µl/100 µl/200 µl |
| Storage | -20°C, pH7.4 PBS, 0.05% NaN ₃ , 40% Glycerol |

Product overview

| | |
|---------------------|--------------------------------------|
| Description | Anti-RHOU rabbit polyclonal antibody |
| Applications | ELISA, WB |
| Immunogen | Synthetic peptide of human RHOU |
| Reactivity | Human, Mouse |
| Content | 0.3 mg/ml |
| Host species | Rabbit |
| Ig class | Immunogen-specific rabbit IgG |
| Purification | Antigen affinity purification |

Target information

| | |
|------------------|-----------------------------------|
| Symbol | RHOU |
| Full name | ras homolog family member U |
| Synonyms | ARHU; G28K; WRCH1; hG28K; CDC42L1 |
| Swissprot | Q7L0Q8 |

Target Background

This gene encodes a member of the Rho family of GTPases. This protein can activate PAK1 and JNK1, and can induce filopodium formation and stress fiber dissolution. It may also mediate the effects of WNT1 signaling in the regulation of cell morphology, cytoskeletal organization, and cell proliferation. A non-coding transcript variant of this gene results from naturally occurring read-through transcription between this locus and the neighboring DUSP5P (dual specificity phosphatase 5 pseudogene) locus.

订购热线: 4008-898-798

Applications

Western blotting

Predicted band size: 28 kDa

Positive control: Mouse stomach and human fetal muscle tissue

Recommended dilution: 500-2000

Gel: 12% SDS-PAGE

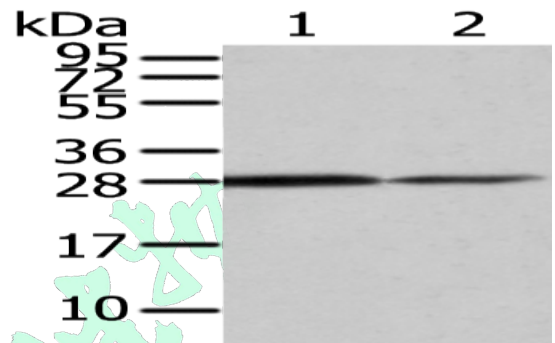
Lysate: 40 µg

Lane 1-2: Mouse stomach and human fetal muscle tissue

Primary antibody: ml262614 (RHOA Antibody) at dilution 1/200

Secondary antibody: Goat anti rabbit IgG at 1/8000 dilution

Exposure time: 10 seconds



ELISA

Recommended dilution: 2000-5000

联系电话: 4008-898-798, 021-61725725

联系QQ: 2881505695, 2881505696

邮箱: mlbio_cn@yeah.net

网址: www.mlbio.cn