

Anti-CBX7 antibody

Cat. No.	ml262675
Package	25 µl/100 µl/200 µl
Storage	-20°C, pH7.4 PBS, 0.05% NaN ₃ , 40% Glycerol

Product overview

Description	Anti-CBX7 rabbit polyclonal antibody
Applications	ELISA, WB, IHC
Immunogen	Synthetic peptide of human CBX7
Reactivity	Human, Mouse, Rat
Content	0.3 mg/ml
Host species	Rabbit
Ig class	Immunogen-specific rabbit IgG
Purification	Antigen affinity purification

Target information

Symbol	CBX7
Full name	chromobox homolog 7

Synonyms

Swissprot O95931

Target Background

CBX7 (Chromobox protein homolog 7) is a 251 amino acid nuclear protein that contains one N-terminal chromo domain and one C-terminal Pc box. Highly expressed in kidney, brain, heart and skeletal muscle, with weaker expression in peripheral blood leukocytes, CBX7 functions as a component of the chromatin-associated polycomb complex (PcG) and is involved in maintaining the transcriptionally repressed state of target genes.

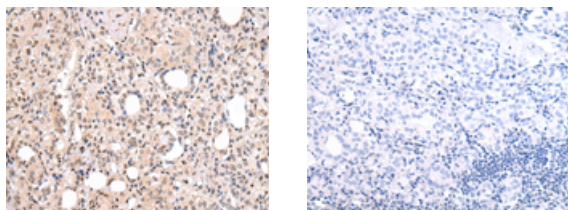
Applications

Immunohistochemistry

Predicted cell location: Cytoplasm and Nucleus

Positive control: Human thyroid cancer

Recommended dilution: 20-100



The image on the left is immunohistochemistry of paraffin-embedded Human thyroid cancer tissue using ml262675(CBX7 Antibody) at dilution 1/20, on the right is treated with synthetic peptide. (Original magnification: $\times 200$)

Western blotting

Predicted band size: 28 kDa

Positive control: Lovo, 293T, Jurkat and hela cell

Recommended dilution: 500-2000

Gel: 12%SDS-PAGE

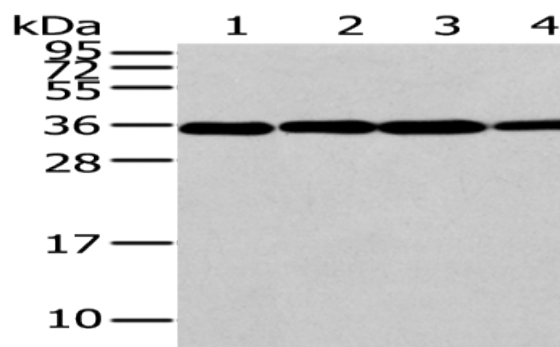
Lysate: 40 µg

Lane 1-4: Lovo, 293T, Jurkat and hela cell

Primary antibody: ml262675(CBX7 Antibody) at dilution 1/200

Secondary antibody: Goat anti rabbit IgG at 1/8000 dilution

Exposure time: 30 seconds



ELISA

Recommended dilution: 2000-5000

联系电话: 4008-898-798, 021-61725725

联系QQ: 2881505695, 2881505696

邮箱: mlbio_cn@yeah.net

网址: www.mlbio.cn