

Anti-BAG2 antibody

Cat. No.	ml262766
Package	25 µl/100 µl/200 µl
Storage	-20°C, pH7.4 PBS, 0.05% NaN ₃ , 40% Glycerol

Product overview

Description	Anti-BAG2 rabbit polyclonal antibody
Applications	ELISA, WB, IHC
Immunogen	Synthetic peptide of human BAG2
Reactivity	Human
Content	0.9 mg/ml
Host species	Rabbit
Ig class	Immunogen-specific rabbit IgG
Purification	Antigen affinity purification

Target information

Symbol	BAG2
Full name	BCL2-associated athanogene 2

Synonyms BAG-2; dJ41711.2

Swissprot O95816

Target Background

BAG proteins compete with Hip for binding to the Hsc70/Hsp70 ATPase domain and promote substrate release. All the BAG proteins have an approximately 45-amino acid BAG domain near the C terminus but differ markedly in their N-terminal regions. The predicted BAG2 protein contains 211 amino acids. The BAG domains of BAG1, BAG2, and BAG3 interact specifically with the Hsc70 ATPase domain in vitro and in mammalian cells. All 3 proteins bind with high affinity to the ATPase domain of Hsc70 and inhibit its chaperone activity in a Hip-repressible manner.

Applications

Immunohistochemistry

Predicted cell location: Cytoplasm

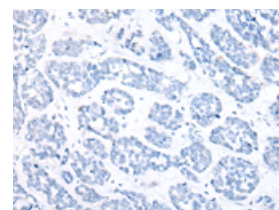
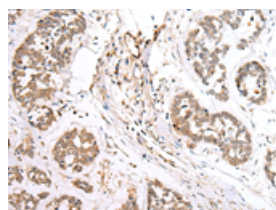
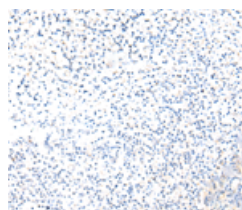
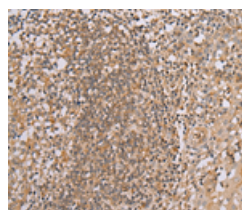
Predicted cell location: Cytoplasm

Positive control: Human tonsil

Positive control: Human esophagus cancer

Recommended dilution: 30-150

Recommended dilution: 30-150



The image on the left is immunohistochemistry of paraffin-embedded Human tonsil tissue using ml262766(BAG2 Antibody) at dilution 1/40, on the right is treated with synthetic peptide. (Original magnification: ×200)

The image on the left is immunohistochemistry of paraffin-embedded Human esophagus cancer tissue using ml262766(BAG2 Antibody) at dilution 1/40, on the right is treated with synthetic peptide. (Original magnification: ×200)

Western blotting

Predicted band size: 24 kDa

Positive control: Human fetal muscle tissue, HEPG2, Jurkat, Hela, A431 and A549 cell

Recommended dilution: 500-2000

Gel: 12%SDS-PAGE

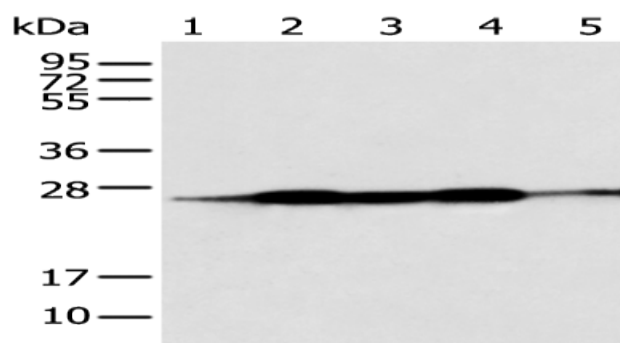
Lysate: 40 µg

Lane 1-6: Human fetal muscle tissue, HEPG2, Jurkat, Hela, A431 and A549 cell

Primary antibody: ml262766(BAG2 Antibody) at dilution 1/550

Secondary antibody: Goat anti rabbit IgG at 1/8000 dilution

Exposure time: 3 seconds



ELISA

Recommended dilution: 5000-10000

联系电话: 4008-898-798, 021-61725725

联系QQ: 2881505695, 2881505696

邮箱: mlbio_cn@yeah.net

网址: www.mlbio.cn