

## Anti-CHRNA9 antibody

<b>Cat. No.</b>	ml262812
<b>Package</b>	25 µl/100 µl/200 µl
<b>Storage</b>	-20°C, pH7.4 PBS, 0.05% NaN <sub>3</sub> , 40% Glycerol

### Product overview

<b>Description</b>	Anti-CHRNA9 rabbit polyclonal antibody
<b>Applications</b>	ELISA, WB, IHC
<b>Immunogen</b>	Synthetic peptide of human CHRNA9
<b>Reactivity</b>	Human, Rat
<b>Content</b>	1.4 mg/ml
<b>Host species</b>	Rabbit
<b>Ig class</b>	Immunogen-specific rabbit IgG
<b>Purification</b>	Antigen affinity purification

### Target information

<b>Symbol</b>	CHRNA9
<b>Full name</b>	cholinergic receptor nicotinic alpha 9 subunit

**Synonyms** NACHRA9; HSA243342

**Swissprot** Q9UGM1

#### **Target Background**

This gene is a member of the ligand-gated ionic channel family and nicotinic acetylcholine receptor gene superfamily. It encodes a plasma membrane protein that forms homo- or hetero-oligomeric divalent cation channels. This protein is involved in cochlea hair cell development and is also expressed in the outer hair cells (OHCs) of the adult cochlea.

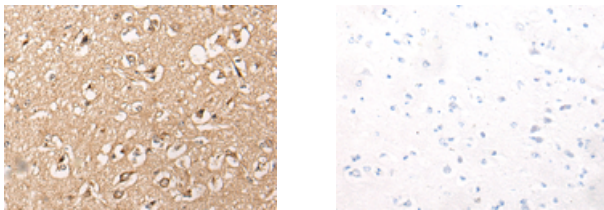
## Applications

### Immunohistochemistry

Predicted cell location: Cell membrane

Positive control: Human brain

Recommended dilution: 40-200



The image on the left is immunohistochemistry of paraffin-embedded Human brain tissue using ml262812(CHRNA9 Antibody) at dilution 1/50, on the right is treated with synthetic peptide. (Original magnification:  $\times 200$ )

### Western blotting

Predicted band size: 55 kDa

Positive control: Human cerebrum tissue and Human cerebella tissue lysates

Recommended dilution: 200-1000

Gel: 8%SDS-PAGE

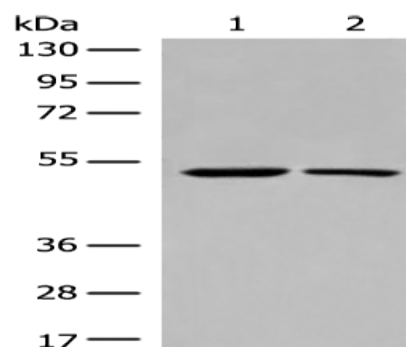
Lysate: 40  $\mu$ g

Lane 1-2: Human cerebrum tissue and Human cerebella tissue lysates

Primary antibody: ml262812(CHRNA9 Antibody) at dilution 1/400

Secondary antibody: Goat anti rabbit IgG at 1/8000 dilution

Exposure time: 30 seconds



## ELISA

Recommended dilution: 5000-10000

联系电话: 4008-898-798, 021-61725725

联系QQ: 2881505695, 2881505696

邮箱: [mlbio\\_cn@yeah.net](mailto:mlbio_cn@yeah.net)

网址: [www.mlbio.cn](http://www.mlbio.cn)