

Anti-GANAB antibody

Cat. No.	ml262838
Package	25 µl/100 µl/200 µl
Storage	-20°C, pH7.4 PBS, 0.05% NaN ₃ , 40% Glycerol

Product overview

Description	Anti-GANAB rabbit polyclonal antibody
Applications	ELISA, WB
Immunogen	Synthetic peptide of human GANAB
Reactivity	Human, Mouse
Content	0.6 mg/ml
Host species	Rabbit
Ig class	Immunogen-specific rabbit IgG
Purification	Antigen affinity purification

Target information

Symbol	GANAB
Full name	glucosidase, alpha; neutral AB
Synonyms	G2AN; GLUII
Swissprot	Q14697

Target Background

Trimming of glucoses from N-linked core glycans on newly synthesized glycoproteins occurs sequentially through the action of Glucosidases I and II in the endoplasmic reticulum (ER). Glucosidase II is an ER-localized enzyme that contains a and b subunits (Glucosidase IIa and Glucosidase IIb) which form a defined heterodimeric complex. Glucosidase IIa is the catalytic core of the enzyme and can function independently of the b subunit. The sequence of Glucosidase IIb encodes protein rich in glutamic and aspartic acid with a putative ER retention signal (HDEL) at the C-terminus.

订购热线: 4008-898-798

Applications

Western blotting

Predicted band size: 107 kDa

Positive control: Hela, A431, Hepg-2, 293T and Raji cell

Recommended dilution: 200-1000

Gel: 6% SDS-PAGE

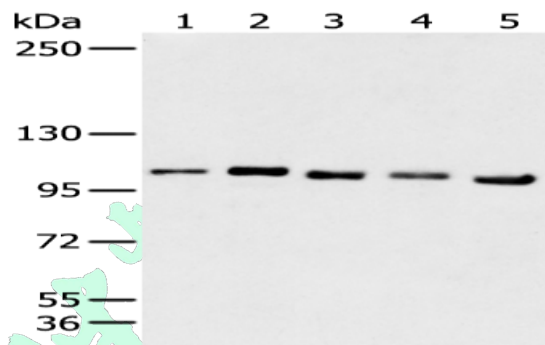
Lysate: 40 µg

Lane 1-5: Raji, 293T, Hepg2, A431 and Hela cell

Primary antibody: ml262838 (GANAB Antibody) at dilution 1/200

Secondary antibody: Goat anti rabbit IgG at 1/8000 dilution

Exposure time: 15 seconds



ELISA

Recommended dilution: 1000-2000

联系电话: 4008-898-798, 021-61725725

联系QQ: 2881505695, 2881505696

邮箱: mlbio_cn@yeah.net

网址: www.mlbio.cn