

Anti-KLRC2 antibody

Cat. No.	ml262844
Package	25 µl/100 µl/200 µl
Storage	-20°C, pH7.4 PBS, 0.05% NaN ₃ , 40% Glycerol

Product overview

Description	Anti-KLRC2 rabbit polyclonal antibody
Applications	ELISA, WB
Immunogen	Synthetic peptide of human KLRC2
Reactivity	Human
Content	0.7 mg/ml
Host species	Rabbit
Ig class	Immunogen-specific rabbit IgG
Purification	Antigen affinity purification

Target information

Symbol	KLRC2
Full name	killer cell lectin-like receptor subfamily C, member 2
Synonyms	NKG2C; CD159c; NKG2-C
Swissprot	P26717

Target Background

Natural killer (NK) cells are lymphocytes that can mediate lysis of certain tumor cells and virus-infected cells without previous activation. They can also regulate specific humoral and cell-mediated immunity. NK cells preferentially express several calcium-dependent (C-type) lectins, which have been implicated in the regulation of NK cell function. The group, designated KLRC (NKG2) are expressed primarily in natural killer (NK) cells and encodes a family of transmembrane proteins characterized by a type II membrane orientation (extracellular C terminus) and the presence of a C-type lectin domain.

订购热线: 4008-898-798

Applications

Western blotting

Predicted band size: 26 kDa

Positive control: 293T, Hela, A431, Hepg2, MCF-7, Jurkat and K562 cell

Recommended dilution: 200-1000

Gel: 12% SDS-PAGE

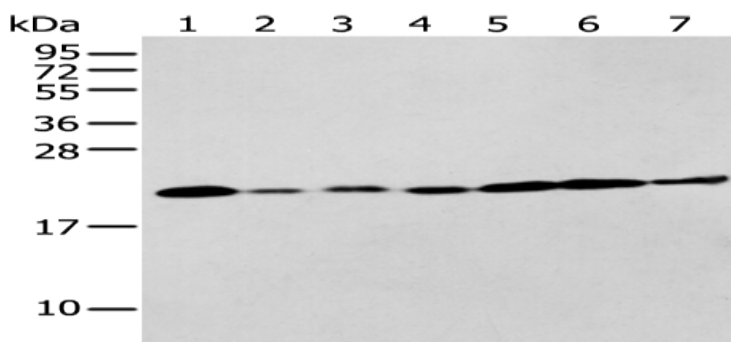
Lysate: 40 µg

Lane 1-7: 293T, Hela, A431, Hepg2, MCF-7, Jurkat and K562 cell

Primary antibody: ml262844 (KLRC2 Antibody) at dilution 1/200

Secondary antibody: Goat anti rabbit IgG at 1/8000 dilution

Exposure time: 25 seconds



ELISA

Recommended dilution: 5000-10000

联系电话: 4008-898-798, 021-61725725

联系QQ: 2881505695, 2881505696

邮箱: mlbio_cn@yeah.net

网址: www.mlbio.cn