

## Anti-GLI3 antibody

|                 |   |
|-----------------|---|
| <b>Cat. No.</b> | ml262899  |
| <b>Package</b>  | 25 µl/100 µl/200 µl                                     |
| <b>Storage</b>  | -20°C, pH7.4 PBS, 0.05% NaN <sub>3</sub> , 40% Glycerol |

### Product overview

|                     |                                      |
|---------------------|--------------------------------------|
| <b>Description</b>  | Anti-GLI3 rabbit polyclonal antibody |
| <b>Applications</b> | ELISA, WB, IHC                       |
| <b>Immunogen</b>    | Synthetic peptide of human GLI3      |
| <b>Reactivity</b>   | Human, Mouse                         |
| <b>Content</b>      | 0.8 mg/ml                            |
| <b>Host species</b> | Rabbit                               |
| <b>Ig class</b>     | Immunogen-specific rabbit IgG        |
| <b>Purification</b> | Antigen affinity purification        |

### Target information

|                  |                          |
|------------------|--------------------------|
| <b>Symbol</b>    | GLI3                     |
| <b>Full name</b> | GLI family zinc finger 3 |

|                  |  |
|------------------|--|
| <b>Synonyms</b>  | PHS; ACLS; GCPS; PAPA; PAPB; PAP-A; PAPA1; PPDIV; GLI3FL; GLI3-190 |
| <b>Swissprot</b> | P10071   |

#### Target Background

This gene encodes a protein which belongs to the C2H2-type zinc finger proteins subclass of the Gli family. They are characterized as DNA-binding transcription factors and are mediators of Sonic hedgehog (Shh) signaling. The protein encoded by this gene localizes in the cytoplasm and activates patched Drosophila homolog (PTCH) gene expression. It is also thought to play a role during embryogenesis. Mutations in this gene have been associated with several diseases, including Greig cephalopolysyndactyly syndrome, Pallister-Hall syndrome, preaxial polydactyly type IV, and postaxial polydactyly types A1 and B.

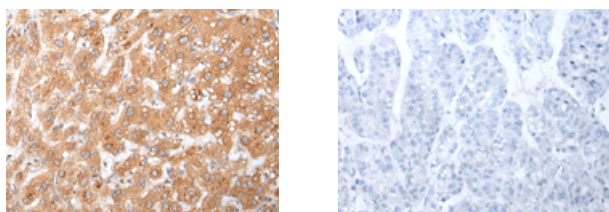
## Applications

### Immunohistochemistry

Predicted cell location: Cytoplasm or Nucleus

Positive control: Human liver cancer

Recommended dilution: 25-100

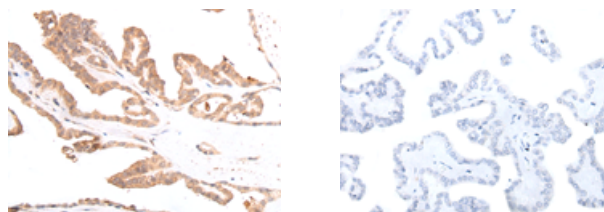


The image on the left is immunohistochemistry of paraffin-embedded Human liver cancer tissue using ml262899(GLI3 Antibody) at dilution 1/20, on the right is treated with synthetic peptide. (Original magnification:  $\times 200$ )

Predicted cell location: Cytoplasm or Nucleus

Positive control: Human thyroid cancer

Recommended dilution: 25-100



The image on the left is immunohistochemistry of paraffin-embedded Human thyroid cancer tissue using ml262899(GLI3 Antibody) at dilution 1/20, on the right is treated with synthetic peptide. (Original magnification:  $\times 200$ )

### Western blotting

Predicted band size: 170 kDa

Positive control: Mouse liver tissue

Recommended dilution: 200-1000

Gel: 6%SDS-PAGE

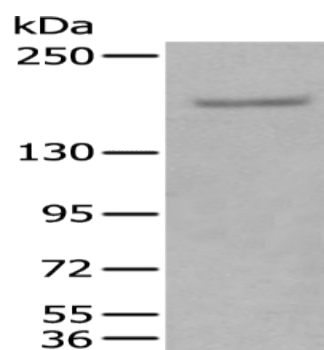
Lysate: 40  $\mu$ g

Lane: Mouse liver tissue

Primary antibody: ml262899(GLI3 Antibody) at dilution 1/250

Secondary antibody: Goat anti rabbit IgG at 1/8000 dilution

Exposure time: 2 minutes



#### ELISA

Recommended dilution: 5000-10000

联系电话: 4008-898-798, 021-61725725

联系QQ: 2881505695, 2881505696

邮箱: [mlbio\\_cn@yeah.net](mailto:mlbio_cn@yeah.net)

网址: [www.mlbio.cn](http://www.mlbio.cn)