

## Anti-PRH2 antibody

<b>Cat. No.</b>	ml262921
<b>Package</b>	25 µl/100 µl/200 µl
<b>Storage</b>	-20°C, pH7.4 PBS, 0.05% NaN <sub>3</sub> , 40% Glycerol

### Product overview

<b>Description</b>	Anti-PRH2 rabbit polyclonal antibody
<b>Applications</b>	ELISA, WB, IHC
<b>Immunogen</b>	Synthetic peptide of human PRH2
<b>Reactivity</b>	Human
<b>Content</b>	0.7 mg/ml
<b>Host species</b>	Rabbit
<b>Ig class</b>	Immunogen-specific rabbit IgG
<b>Purification</b>	Antigen affinity purification

### Target information

<b>Symbol</b>	PRH2
<b>Full name</b>	proline-rich protein HaeIII subfamily 2

**Synonyms** Pr; pa; PRH1; db-s; PIF-S; pr1/Pr2; PRP-1/PRP-2

**Swissprot** P02810

### Target Background

PRH1 (acidic salivary proline-rich protein, HaeIII type, 1) and PRH2 (acidic salivary proline-rich protein, HaeIII type, 2), contain repeated cleavage sites for the restriction enzyme HaeIII and code for PRPs. PRH1/2, also known as salivary acidic proline-rich phosphoprotein 1/2, PRP-1/PRP-2 or parotid proline-rich protein 1/2, is a 166 amino acid secreted protein that functions as a highly potent inhibitor of calcium phosphate crystal growth. Similar to other PRPs, PRH1/2 provides a protective and reparative environment for dental enamel, which is important for teeth integrity.

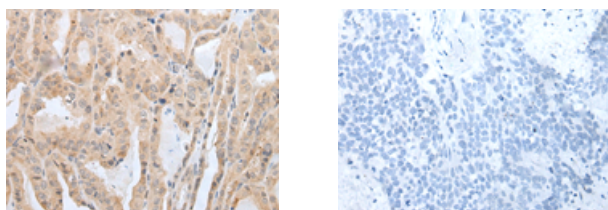
## Applications

### Immunohistochemistry

Predicted cell location: Secreted

Positive control: Human thyroid cancer

Recommended dilution: 25-100



The image on the left is immunohistochemistry of paraffin-embedded Human thyroid cancer tissue using ml262921(PRH2 Antibody) at dilution 1/30, on the right is treated with synthetic peptide. (Original magnification: ×200)

### Western blotting

Predicted band size: 17 kDa

Positive control: HEPG2 cell

Recommended dilution: 200-1000

Gel: 12%SDS-PAGE

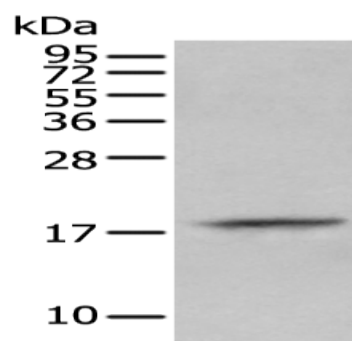
Lysate: 40 µg

Lane: HEPG2 cell

Primary antibody: ml262921(PRH2 Antibody) at dilution 1/350

Secondary antibody: Goat anti rabbit IgG at 1/8000 dilution

Exposure time: 2 minutes



#### ELISA

Recommended dilution: 5000-10000

联系电话: 4008-898-798, 021-61725725

联系QQ: 2881505695, 2881505696

邮箱: [mlbio\\_cn@yeah.net](mailto:mlbio_cn@yeah.net)

网址: [www.mlbio.cn](http://www.mlbio.cn)