

Anti-XKR6 antibody

Cat. No.	ml123586
Package	25 µl/100 µl/200 µl
Storage	-20°C, pH7.4 PBS, 0.05% NaN ₃ , 40% Glycerol

Product overview

Description	Anti-XKR6 rabbit polyclonal antibody
Applications	ELISA, IHC
Immunogen	Fusion protein of human XKR6
Reactivity	Human, Mouse, Rat
Content	0.7 mg/ml
Host species	Rabbit
Ig class	Immunogen-specific rabbit IgG
Purification	Antigen affinity purification

Target information

Symbol	XKR6
Full name	XK, Kell blood group complex subunit-related family, member 6
Synonyms	XRG6; C8orf5; C8orf7; C8orf21
Swissprot	Q5GH73

Target Background

XK is a 444 amino acid protein that spans the membrane 10 times and carries the ubiquitous antigen, Kx, which determines blood type. The XK (X-linked Kx blood group)-related gene family are homologs of XK. XKR6 (XK-related protein 6) is a 641 amino acid multi-pass membrane protein that likely is a component of the XK/Kell complex of the Kell blood group system. The gene encoding XKR6 maps to human chromosome 8, which is made up of nearly 146 million bases and encodes about 800 genes. There are two isoforms of XKR6 that are produced as a result of alternative splicing events.

订购热线: 4008-898-798

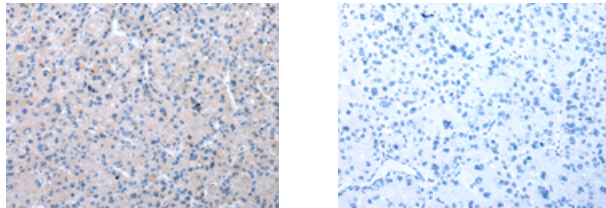
Applications

Immunohistochemistry

Predicted cell location: Cytoplasm

Positive control: Human liver cancer

Recommended dilution: 25-100



The image on the left is immunohistochemistry of paraffin-embedded Human liver cancer tissue using ml123586(XKR6 Antibody) at dilution 1/40, on the right is treated with fusion protein. (Original magnification: $\times 200$)

ELISA

Recommended dilution: 2000-5000

联系电话: 4008-898-798, 021-61725725

联系QQ: 2881505695, 2881505696

邮箱: mlbio_cn@yeah.net

网址: www.mlbio.cn