

Anti-ZFAND1 antibody

Cat. No.	ml123598
Package	25 µl/100 µl/200 µl
Storage	-20°C, pH7.4 PBS, 0.05% NaN ₃ , 40% Glycerol

Product overview

Description	Anti-ZFAND1 rabbit polyclonal antibody
Applications	ELISA, IHC
Immunogen	Full length fusion protein
Reactivity	Human, Mouse
Content	0.8 mg/ml
Host species	Rabbit
Ig class	Immunogen-specific rabbit IgG
Purification	Antigen affinity purification

Target information

Symbol	ZFAND1
Full name	zinc finger, AN1-type domain 1
Synonyms	
Swissprot	Q8TCF1

Target Background

Zinc-finger proteins contain DNA-binding domains and have a wide variety of functions, most of which encompass some form of transcriptional activation or repression. The majority of zinc-finger proteins contain a Krüppel-type DNA binding domain and a KRAB domain, which is thought to interact with KAP1, thereby recruiting histone modifying proteins. ZFAND1 (AN1-type zinc finger protein 1) is a 268 amino acid protein that contains 2 AN1-type zinc fingers, which are often found in proteins that contain a ubiquitin-like domain and therefore play a role in the ubiquitination pathway. AN1-type zinc fingers contains six conserved cysteines and two histidines and have a dimetal (zinc)-bound alpha/beta fold. There are two isoforms of ZFAND1 that are produced as a result of alternative splicing events.

订购热线: 4008-898-798

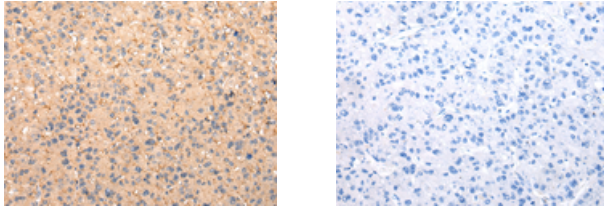
Applications

Immunohistochemistry

Predicted cell location: Cytoplasm

Positive control: Human liver cancer

Recommended dilution: 25-100



The image on the left is immunohistochemistry of paraffin-embedded Human liver cancer tissue using ml123598(ZFAND1 Antibody) at dilution 1/25, on the right is treated with fusion protein. (Original magnification: $\times 200$)

ELISA

Recommended dilution: 2000-5000

联系电话: 4008-898-798, 021-61725725

联系QQ: 2881505695, 2881505696

邮箱: mlbio_cn@yeah.net

网址: www.mlbio.cn