

Anti-RABL2B antibody

Cat. No.	ml123650
Package	25 µl/100 µl/200 µl
Storage	-20°C, pH7.4 PBS, 0.05% NaN ₃ , 40% Glycerol

Product overview

Description	Anti-RABL2B rabbit polyclonal antibody
Applications	ELISA, IHC
Immunogen	Fusion protein of human RABL2B
Reactivity	Human
Content	0.5 mg/ml
Host species	Rabbit
Ig class	Immunogen-specific rabbit IgG
Purification	Antigen affinity purification

Target information

Symbol	RABL2B
Full name	RAB, member of RAS oncogene family-like 2B
Synonyms	
Swissprot	Q9UNT1

Target Background

The RABL2B protein is a member of the RAB gene family which belongs to the RAS GTPase superfamily. RABL2B is located within a subtelomeric region of 22q13.3. Multiple alternatively spliced transcript variants encoding several different isoforms have been found for this gene.

订购热线: 4008-898-798

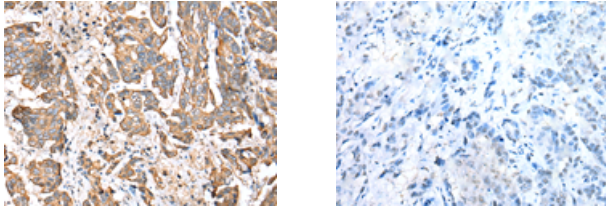
Applications

Immunohistochemistry

Predicted cell location: Cytoplasm and Cell membrane

Positive control: Human breast cancer

Recommended dilution: 25-100



The image on the left is immunohistochemistry of paraffin-embedded Human breast cancer tissue using ml123650(RABL2B Antibody) at dilution 1/25, on the right is treated with fusion protein. (Original magnification: $\times 200$)

ELISA

Recommended dilution: 5000-10000

联系电话: 4008-898-798, 021-61725725

联系QQ: 2881505695, 2881505696

邮箱: mlbio_cn@yeah.net

网址: www.mlbio.cn