

Anti-RIMKLB antibody

Cat. No.	ml123675
Package	25 µl/100 µl/200 µl
Storage	-20°C, pH7.4 PBS, 0.05% NaN ₃ , 40% Glycerol

Product overview

Description	Anti-RIMKLB rabbit polyclonal antibody
Applications	ELISA, IHC
Immunogen	Full length fusion protein
Reactivity	Human, Mouse
Content	0.6 mg/ml
Host species	Rabbit
Ig class	Immunogen-specific rabbit IgG
Purification	Antigen affinity purification

Target information

Symbol	RIMKLB
Full name	ribosomal modification protein rimK-like family member B
Synonyms	NAAGS; FAM80B; NAAGS-I
Swissprot	Q9ULI2

Target Background

RIMKLB (ribosomal modification protein rimK-like family member B), also known as NAAGS (N-acetyl-aspartyl-glutamate synthetase B), beta-citryl-glutamate synthase B or FAM80B, is a 386 amino acid cytoplasmic protein that belongs to the rimK family. Acting as the catalyst in the synthesis of beta-citryl-glutamate and N-acetyl-aspartyl-glutamate, RIMKLB contains one ATP-grasp domain and exists as two alternatively spliced isoforms. The gene encoding RIMKLB maps to human chromosome 12, which encodes over 1,100 genes and comprises approximately 4.5% of the human genome. Chromosome 12 is associated with a variety of diseases and afflictions, including hypochondrogenesis, achondrogenesis, Kniest dysplasia, Noonan syndrome and trisomy 12p, which causes facial developmental defects and seizure disorders.

订购热线: 4008-898-798

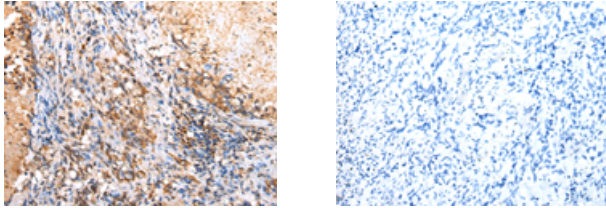
Applications

Immunohistochemistry

Predicted cell location: Cytoplasm

Positive control: Human lung cancer

Recommended dilution: 25-100



The image on the left is immunohistochemistry of paraffin-embedded Human lung cancer tissue using ml123675(RIMKLB Antibody) at dilution 1/30, on the right is treated with fusion protein. (Original magnification: $\times 200$)

ELISA

Recommended dilution: 2000-5000

联系电话: 4008-898-798, 021-61725725

联系QQ: 2881505695, 2881505696

邮箱: mlbio_cn@yeah.net

网址: www.mlbio.cn