

Anti-LSM11 antibody

| | |
|-----------------|---|
| Cat. No. | ml123704 |
| Package | 25 µl/100 µl/200 µl |
| Storage | -20°C, pH7.4 PBS, 0.05% NaN ₃ , 40% Glycerol |

Product overview

| | |
|---------------------|---------------------------------------|
| Description | Anti-LSM11 rabbit polyclonal antibody |
| Applications | ELISA, IHC |
| Immunogen | Fusion protein of human LSM11 |
| Reactivity | Human, Mouse |
| Content | 0.6 mg/ml |
| Host species | Rabbit |
| Ig class | Immunogen-specific rabbit IgG |
| Purification | Antigen affinity purification |

Target information

| | |
|------------------|--|
| Symbol | LSM11 |
| Full name | LSM11, U7 small nuclear RNA associated |
| Synonyms | |
| Swissprot | P83369 |

Target Background

Sm and Sm-like (LSm) proteins form donut-shaped, ubiquitously expressed heptameric complexes that are involved in various steps of RNA metabolism, including RNA-protein interactions and structural changes that are required during ribosomal subunit assembly. LSM11 is a 360 amino acid protein that localizes to the nucleus and belongs to the LSm subfamily of snRNP Sm proteins. Containing an N-terminal domain that is necessary for pre-mRNA cleavage, LSM11 functions to binds specifically to U7 snRNA and is thought to play a role in cell cycle regulation and cell growth. The gene encoding LSM11 maps to human chromosome 5, which contains 181 million base pairs and comprises nearly 6% of the human genome. Deletion of the p arm of chromosome 5 leads to Cri du chat syndrome, while deletion of the q arm or of chromosome 5 altogether is common in therapy-related acute myelogenous leukemias and myelodysplastic syndrome.

订购热线: 4008-898-798

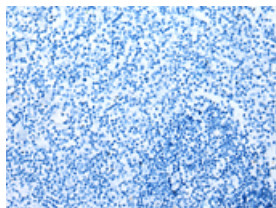
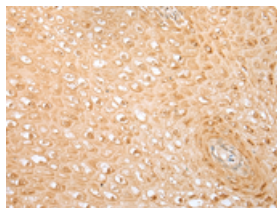
Applications

Immunohistochemistry

Predicted cell location: Nucleus and Cytoplasm

Positive control: Human tonsil

Recommended dilution: 25-100

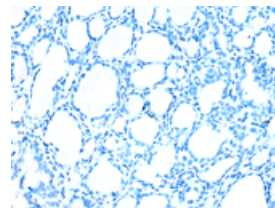
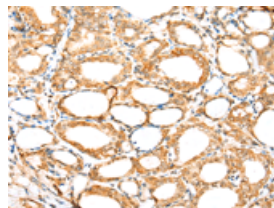


The image on the left is immunohistochemistry of paraffin-embedded Human tonsil tissue using ml123704(LSM11 Antibody) at dilution 1/20, on the right is treated with fusion protein. (Original magnification: $\times 200$)

Predicted cell location: Nucleus and Cytoplasm

Positive control: Human thyroid cancer

Recommended dilution: 25-100



The image on the left is immunohistochemistry of paraffin-embedded Human thyroid cancer tissue using ml123704(LSM11 Antibody) at dilution 1/20, on the right is treated with fusion protein. (Original magnification: $\times 200$)

ELISA

Recommended dilution: 5000-10000

联系电话: 4008-898-798, 021-61725725

联系QQ: 2881505695, 2881505696

邮箱: mlbio_cn@yeah.net

网址: www.mlbio.cn