

Anti-MEIOB antibody

Cat. No.	ml124317
Package	25 µl/100 µl/200 µl
Storage	-20°C, pH7.4 PBS, 0.05% NaN ₃ , 40% Glycerol

Product overview

Description	Anti-MEIOB rabbit polyclonal antibody
Applications	ELISA, IHC
Immunogen	Fusion protein of human MEIOB
Reactivity	Human
Content	0.5 mg/ml
Host species	Rabbit
Ig class	Immunogen-specific rabbit IgG
Purification	Antigen affinity purification

Target information

Symbol	MEIOB
Full name	meiosis specific with OB domains
Synonyms	gs129; C16orf73
Swissprot	Q8N635

Target Background

Single-stranded DNA-binding protein required for homologous recombination in meiosis I. Required for double strand breaks (DSBs) repair and crossover formation and promotion of faithful and complete synapsis. Not required for the initial loading of recombinases but required to maintain a proper number of RAD51 and DMC1 foci after the zygotene stage. May act by ensuring the stabilization of recombinases, which is required for successful homology search and meiotic recombination. Displays Single-stranded DNA 3'-5' exonuclease activity in vitro (By similarity).

订购热线: 4008-898-798

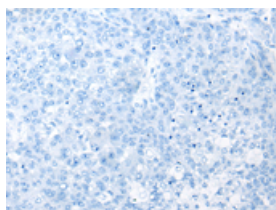
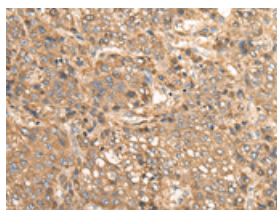
Applications

Immunohistochemistry

Predicted cell location: Cytoplasm or Nucleus

Positive control: Human liver cancer

Recommended dilution: 25-100

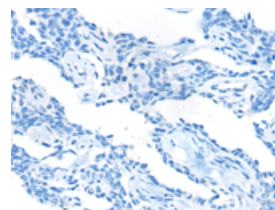
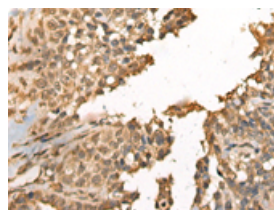


The image on the left is immunohistochemistry of paraffin-embedded Human liver cancer tissue using ml124317(MEIOB Antibody) at dilution 1/30, on the right is treated with fusion protein. (Original magnification: $\times 200$)

Predicted cell location: Cytoplasm or Nucleus

Positive control: Human ovarian cancer

Recommended dilution: 25-100



The image on the left is immunohistochemistry of paraffin-embedded Human ovarian cancer tissue using ml124317(MEIOB Antibody) at dilution 1/30, on the right is treated with fusion protein. (Original magnification: $\times 200$)

ELISA

Recommended dilution: 5000-10000

联系电话: 4008-898-798, 021-61725725

联系QQ: 2881505695, 2881505696

邮箱: mlbio_cn@yeah.net

网址: www.mlbio.cn