

Anti-CCNB1IP1 antibody

Cat. No.	ml124441
Package	25 µl/100 µl/200 µl
Storage	-20°C, pH7.4 PBS, 0.05% NaN ₃ , 40% Glycerol

Product overview

Description	Anti-CCNB1IP1 rabbit polyclonal antibody
Applications	ELISA, IHC
Immunogen	Full length fusion protein
Reactivity	Human, Mouse
Content	0.4 mg/ml
Host species	Rabbit
Ig class	Immunogen-specific rabbit IgG
Purification	Antigen affinity purification

Target information

Symbol	CCNB1IP1
Full name	cyclin B1 interacting protein 1
Synonyms	HEI10; C14orf18
Swissprot	Q9NPC3

Target Background

HEI10 is a member of the E3 ubiquitin ligase family and functions in progression of the cell cycle through G(2)/M.[supplied by OMIM, Apr 2004]

订购热线: 4008-898-798

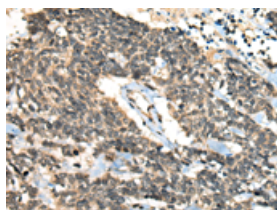
Applications

Immunohistochemistry

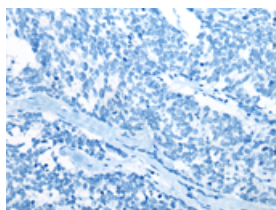
Predicted cell location: Nucleus

Positive control: Human lung cancer

Recommended dilution: 30-150



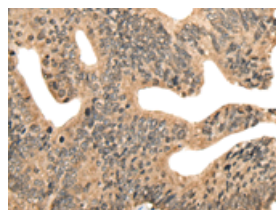
The image on the left is immunohistochemistry of paraffin-embedded Human lung cancer tissue using ml124441(CCNB1IP1 Antibody) at dilution 1/30, on the right is treated with fusion protein. (Original magnification: $\times 200$)



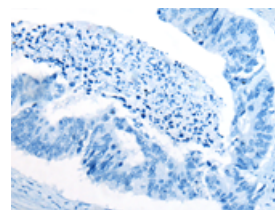
Predicted cell location: Nucleus

Positive control: Human colorectal cancer

Recommended dilution: 30-150



The image on the left is immunohistochemistry of paraffin-embedded Human colorectal cancer tissue using ml124441(CCNB1IP1 Antibody) at dilution 1/30, on the right is treated with fusion protein. (Original magnification: $\times 200$)



ELISA

Recommended dilution: 5000-10000

联系电话: 4008-898-798, 021-61725725

联系QQ: 2881505695, 2881505696

邮箱: mlbio_cn@yeah.net

网址: www.mlbio.cn