

Anti-CRB3 antibody

Cat. No.	ml124677
Package	25 µl/100 µl/200 µl
Storage	-20°C, pH7.4 PBS, 0.05% NaN ₃ , 40% Glycerol

Product overview

Description	Anti-CRB3 rabbit polyclonal antibody
Applications	ELISA, IHC
Immunogen	Fusion protein of human CRB3
Reactivity	Human
Content	0.96 mg/ml
Host species	Rabbit
Ig class	Immunogen-specific rabbit IgG
Purification	Antigen affinity purification

Target information

Symbol	CRB3
Full name	crumbs 3, cell polarity complex component
Synonyms	
Swissprot	Q9BUF7

Target Background

This gene encodes a member of the Crumbs family of proteins. This gene is widely expressed in epithelial tissues where the encoded protein isoforms play various roles such as the control of cytokinesis and ciliogenesis or the formation of tight junctions. Alternative splicing results in multiple transcript variants encoding different isoforms.

订购热线: 4008-898-798

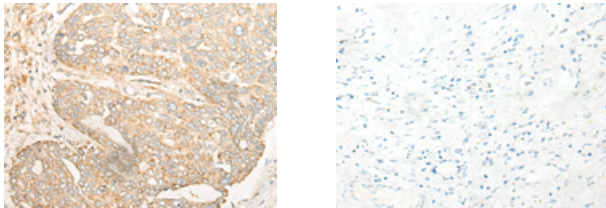
Applications

Immunohistochemistry

Predicted cell location: Cell membrane and Cytoplasm

Positive control: Human liver cancer

Recommended dilution: 25-100



The image on the left is immunohistochemistry of paraffin-embedded Human liver cancer tissue using ml124677(CRB3 Antibody) at dilution 1/30, on the right is treated with fusion protein. (Original magnification: ×200)

ELISA

Recommended dilution: 5000-10000

联系电话: 4008-898-798, 021-61725725

联系QQ: 2881505695, 2881505696

邮箱: mlbio_cn@yeah.net

网址: www.mlbio.cn