

Anti-SLC22A24 antibody

Cat. No.	ml124862
Package	25 µl/100 µl/200 µl
Storage	-20°C, pH7.4 PBS, 0.05% NaN ₃ , 40% Glycerol

Product overview

Description	Anti-SLC22A24 rabbit polyclonal antibody
Applications	ELISA, IHC
Immunogen	Fusion protein of human SLC22A24
Reactivity	Human
Content	1.08 mg/ml
Host species	Rabbit
Ig class	Immunogen-specific rabbit IgG
Purification	Antigen affinity purification

Target information

Symbol	SLC22A24
Full name	solute carrier family 22 member 24
Synonyms	NET46
Swissprot	Q8N4F4

Target Background

SLC22A24 belongs to a large family of transmembrane proteins that function as uniporters, symporters, and antiporters to transport organic ions across cell membranes (Jacobsson et al., 2007 [PubMed 17714910]).

订购热线: 4008-898-798

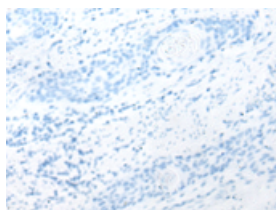
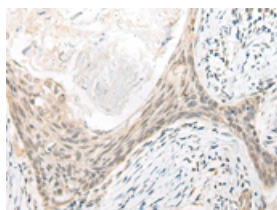
Applications

Immunohistochemistry

Predicted cell location: Nucleus and Cytoplasm

Positive control: Human esophagus cancer

Recommended dilution: 25-100

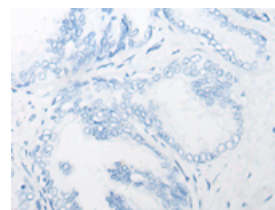
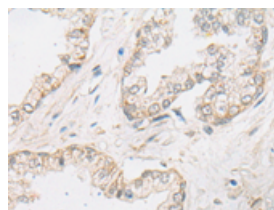


The image on the left is immunohistochemistry of paraffin-embedded Human esophagus cancer tissue using ml124862(SLC22A24 Antibody) at dilution 1/30, on the right is treated with fusion protein. (Original magnification: $\times 200$)

Predicted cell location: Nucleus and Cytoplasm

Positive control: Human prostate cancer

Recommended dilution: 25-100



The image on the left is immunohistochemistry of paraffin-embedded Human prostate cancer tissue using ml124862(SLC22A24 Antibody) at dilution 1/30, on the right is treated with fusion protein. (Original magnification: $\times 200$)

ELISA

Recommended dilution: 5000-10000

联系电话: 4008-898-798, 021-61725725

联系QQ: 2881505695, 2881505696

邮箱: mlbio_cn@yeah.net

网址: www.mlbio.cn