

Anti-OTX1 antibody

Cat. No.	ml124879
Package	25 µl/100 µl/200 µl
Storage	-20°C, pH7.4 PBS, 0.05% NaN ₃ , 40% Glycerol

Product overview

Description	Anti-OTX1 rabbit polyclonal antibody
Applications	ELISA, IHC
Immunogen	Fusion protein of human OTX1
Reactivity	Human, Mouse, Rat
Content	1.08 mg/ml
Host species	Rabbit
Ig class	Immunogen-specific rabbit IgG
Purification	Antigen affinity purification

Target information

Symbol	OTX1
Full name	orthodenticle homeobox 1
Synonyms	
Swissprot	P32242

Target Background

This gene encodes a member of the bicoid sub-family of homeodomain-containing transcription factors. The encoded protein acts as a transcription factor and may play a role in brain and sensory organ development. A similar protein in mouse is required for proper brain and sensory organ development and can cause epilepsy. Alternative splicing results in multiple transcript variants.

订购热线: 4008-898-798

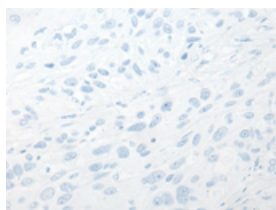
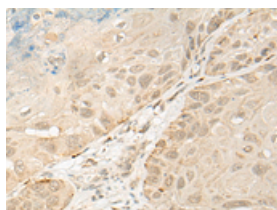
Applications

Immunohistochemistry

Predicted cell location: Nucleus

Positive control: Human esophagus cancer

Recommended dilution: 30-150

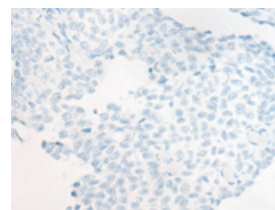
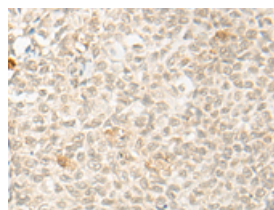


The image on the left is immunohistochemistry of paraffin-embedded Human esophagus cancer tissue using ml124879(OTX1 Antibody) at dilution 1/30, on the right is treated with fusion protein. (Original magnification: $\times 200$)

Predicted cell location: Nucleus

Positive control: Human ovarian cancer

Recommended dilution: 30-150



The image on the left is immunohistochemistry of paraffin-embedded Human ovarian cancer tissue using ml124879(OTX1 Antibody) at dilution 1/30, on the right is treated with fusion protein. (Original magnification: $\times 200$)

ELISA

Recommended dilution: 5000-10000

联系电话: 4008-898-798, 021-61725725

联系QQ: 2881505695, 2881505696

邮箱: mlbio_cn@yeah.net

网址: www.mlbio.cn