

Anti-STOML2 antibody

Cat. No.	ml124881
Package	25 µl/100 µl/200 µl
Storage	-20°C, pH7.4 PBS, 0.05% NaN ₃ , 40% Glycerol

Product overview

Description	Anti-STOML2 rabbit polyclonal antibody
Applications	ELISA, IHC
Immunogen	Fusion protein of human STOML2
Reactivity	Human, Mouse, Rat
Content	0.84 mg/ml
Host species	Rabbit
Ig class	Immunogen-specific rabbit IgG
Purification	Antigen affinity purification

Target information

Symbol	STOML2
Full name	stomatin like 2
Synonyms	SLP-2; HSPC108
Swissprot	Q9UJZ1

Target Background

Stomatin-like protein 2 (STOML2), SLP-2 or EPB72-like 2, is a 356 amino acid member of the mec-2 family of proteins. Expressed ubiquitously at low levels, STOML2 is highly expressed in heart, liver and pancreas. STOML2 is localized to the cytoplasm with some distribution on the membrane. STOML2 was first identified as an overexpressed protein in human endometrial adenocarcinoma. Changes in cell growth in samples with different levels of STOML2 indicate that STOML2 could play a role in endometrial tumorigenesis. STOML2 is also thought to play a role in regulating ion channel conductances or the organization of sphingolipid and cholesterol-rich lipid rafts.

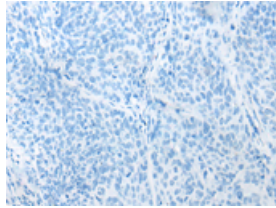
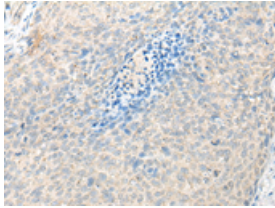
Applications

Immunohistochemistry

Predicted cell location: Cytoplasm

Positive control: Human cervical cancer

Recommended dilution: 25-100

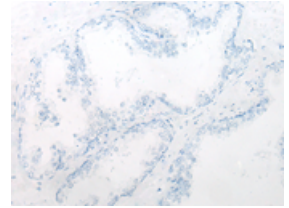
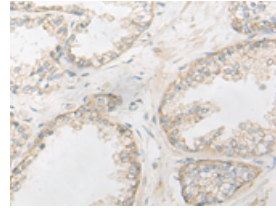


The image on the left is immunohistochemistry of paraffin-embedded Human cervical cancer tissue using ml124881(STOML2 Antibody) at dilution 1/25, on the right is treated with fusion protein. (Original magnification: $\times 200$)

Predicted cell location: Cytoplasm

Positive control: Human prostate cancer

Recommended dilution: 25-100



The image on the left is immunohistochemistry of paraffin-embedded Human prostate cancer tissue using ml124881(STOML2 Antibody) at dilution 1/25, on the right is treated with fusion protein. (Original magnification: $\times 200$)

ELISA

Recommended dilution: 5000-10000

联系电话: 4008-898-798, 021-61725725

联系QQ: 2881505695, 2881505696

邮箱: mlbio_cn@yeah.net

网址: www.mlbio.cn