

Anti-ZBTB43 antibody

Cat. No.	ml125070
Package	25 µl/100 µl/200 µl
Storage	-20°C, pH7.4 PBS, 0.05% NaN ₃ , 40% Glycerol

Product overview

Description	Anti-ZBTB43 rabbit polyclonal antibody
Applications	ELISA, IHC
Immunogen	Fusion protein of human ZBTB43
Reactivity	Human, Mouse
Content	1.56 mg/ml
Host species	Rabbit
Ig class	Immunogen-specific rabbit IgG
Purification	Antigen affinity purification

Target information

Symbol	ZBTB43
Full name	zinc finger and BTB domain containing 43
Synonyms	ZNF-X; ZBTB22B; ZNF297B
Swissprot	O43298

Target Background

May be involved in transcriptional regulation.

订购热线: 4008-898-798

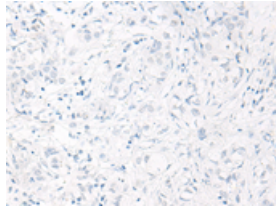
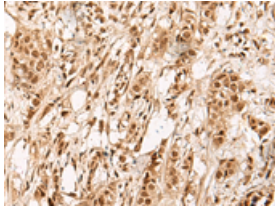
Applications

Immunohistochemistry

Predicted cell location: Nucleus

Positive control: Human breast cancer

Recommended dilution: 50-300

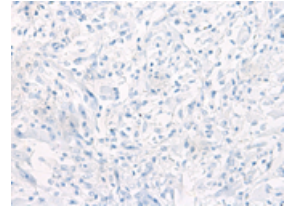
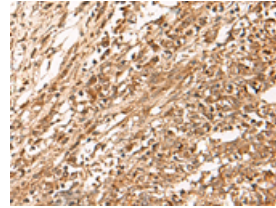


The image on the left is immunohistochemistry of paraffin-embedded Human breast cancer tissue using ml125070(ZBTB43 Antibody) at dilution 1/90, on the right is treated with fusion protein. (Original magnification: $\times 200$)

Predicted cell location: Nucleus

Positive control: Human liver cancer

Recommended dilution: 50-300



The image on the left is immunohistochemistry of paraffin-embedded Human liver cancer tissue using ml125070(ZBTB43 Antibody) at dilution 1/90, on the right is treated with fusion protein. (Original magnification: $\times 200$)

ELISA

Recommended dilution: 5000-10000

联系电话: 4008-898-798, 021-61725725

联系QQ: 2881505695, 2881505696

邮箱: mlbio_cn@yeah.net

网址: www.mlbio.cn