

Anti-TESC antibody

Cat. No.	ml123875
Package	25 µl/100 µl/200 µl
Storage	-20°C, pH7.4 PBS, 0.05% NaN ₃ , 40% Glycerol

Product overview

Description	Anti-TESC rabbit polyclonal antibody
Applications	ELISA, IHC
Immunogen	Fusion protein of human TESC
Reactivity	Human, Mouse
Content	0.6 mg/ml
Host species	Rabbit
Ig class	Immunogen-specific rabbit IgG
Purification	Antigen affinity purification

Target information

Symbol	TESC
Full name	tescalcin
Synonyms	TSC; CHP3
Swissprot	Q96BS2

Target Background

Tescalcin, also known as TESC, TSC or CHP3, is a 267 amino acid protein that contains one EF-hand domain and is expressed abundantly in adult heart tissue. Using calcium as a cofactor, Tescalcin interacts with NHE-1 and functions to couple the activation of the ERK cascade with the expression of Ets proteins during megakaryocytic differentiation. Human Tescalcin shares 97% sequence identity with its mouse counterpart, suggesting a conserved role between species. Multiple isoforms of Tescalcin exist due to alternative splicing events. Functions as an integral cofactor in cell pH regulation by controlling plasma membrane-type Na⁺/H⁺ exchange activity. Promotes the maturation, transport, cell surface stability and exchange activity of SLC9A1/NHE1 at the plasma membrane. Promotes the induction of hematopoietic stem cell differentiation toward megakaryocytic lineage. Essential for the coupling of ERK cascade activation with the expression of ETS family genes in megakaryocytic differentiation. Also involved in granulocytic differentiation in a ERK-dependent manner. Inhibits the phosphatase activity of calcineurin.

订购热线: 4008-898-798

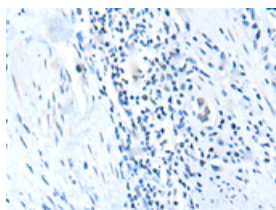
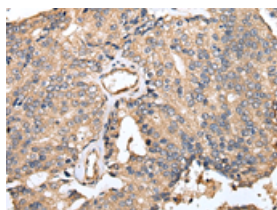
Applications

Immunohistochemistry

Predicted cell location: Cytoplasm and Cell membrane

Positive control: Human prostate cancer

Recommended dilution: 25-100

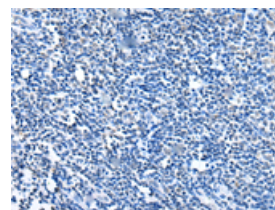
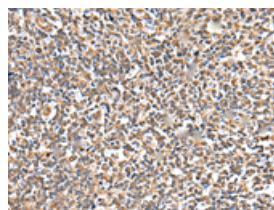


The image on the left is immunohistochemistry of paraffin-embedded Human prostate cancer tissue using ml123875(TESC Antibody) at dilution 1/25, on the right is treated with fusion protein. (Original magnification: $\times 200$)

Predicted cell location: Cytoplasm and Cell membrane

Positive control: Human tonsil

Recommended dilution: 25-100



The image on the left is immunohistochemistry of paraffin-embedded Human tonsil tissue using ml123875(TESC Antibody) at dilution 1/25, on the right is treated with fusion protein. (Original magnification: $\times 200$)

ELISA

Recommended dilution: 5000-10000

联系电话: 4008-898-798, 021-61725725

联系QQ: 2881505695, 2881505696

邮箱: mlbio_cn@yeah.net

网址: www.mlbio.cn