

## Anti-DNAAF5 antibody

|                 |   |
|-----------------|---|
| <b>Cat. No.</b> | ml123899  |
| <b>Package</b>  | 25 µl/100 µl/200 µl                                     |
| <b>Storage</b>  | -20°C, pH7.4 PBS, 0.05% NaN <sub>3</sub> , 40% Glycerol |

### Product overview

|                     |  |
|---------------------|--|
| <b>Description</b>  | Anti-DNAAF5 rabbit polyclonal antibody |
| <b>Applications</b> | ELISA, IHC                             |
| <b>Immunogen</b>    | Fusion protein of human DNAAF5         |
| <b>Reactivity</b>   | Human                                  |
| <b>Content</b>      | 0.9 mg/ml                              |
| <b>Host species</b> | Rabbit                                 |
| <b>Ig class</b>     | Immunogen-specific rabbit IgG          |
| <b>Purification</b> | Antigen affinity purification          |

### Target information

|                  |                                     |
|------------------|-------------------------------------|
| <b>Symbol</b>    | DNAAF5                              |
| <b>Full name</b> | dynein, axonemal, assembly factor 5 |
| <b>Synonyms</b>  | CILD18; HEATR2                      |
| <b>Swissprot</b> | Q86Y56                              |

### Target Background

The protein encoded by this gene is essential for the preassembly or stability of axonemal dynein arms, and is found only in organisms with motile cilia and flagella. Mutations in this gene are associated with primary ciliary dyskinesia-18, a disorder characterized by abnormalities of motile cilia. Alternatively spliced transcript variants have been found for this gene.

订购热线: 4008-898-798

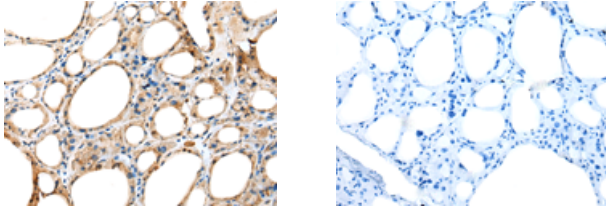
#### Applications

##### Immunohistochemistry

Predicted cell location: Cytoplasm

Positive control: Human thyroid cancer

Recommended dilution: 25-100



The image on the left is immunohistochemistry of paraffin-embedded Human thyroid cancer tissue using ml123899(DNAAF5 Antibody) at dilution 1/35, on the right is treated with fusion protein. (Original magnification:  $\times 200$ )

##### ELISA

Recommended dilution: 5000-10000

联系电话: 4008-898-798, 021-61725725

联系QQ: 2881505695, 2881505696

邮箱: [mlbio\\_cn@yeah.net](mailto:mlbio_cn@yeah.net)

网址: [www.mlbio.cn](http://www.mlbio.cn)