

## Anti-METTL7A antibody

<b>Cat. No.</b>	ml123950
<b>Package</b>	25 µl/100 µl/200 µl
<b>Storage</b>	-20°C, pH7.4 PBS, 0.05% NaN <sub>3</sub> , 40% Glycerol

### Product overview

<b>Description</b>	Anti-METTL7A rabbit polyclonal antibody
<b>Applications</b>	ELISA, IHC
<b>Immunogen</b>	Fusion protein of human METTL7A
<b>Reactivity</b>	Human
<b>Content</b>	0.6 mg/ml
<b>Host species</b>	Rabbit
<b>Ig class</b>	Immunogen-specific rabbit IgG
<b>Purification</b>	Antigen affinity purification

### Target information

<b>Symbol</b>	METTL7A
<b>Full name</b>	methyltransferase like 7A
<b>Synonyms</b>	AAM-B
<b>Swissprot</b>	Q9H8H3

### Target Background

METTL7A (methyltransferase like 7A), also known as AAM-B, is a 244 amino acid protein that is thought to function as a methyltransferase and is encoded by a gene which maps to chromosome 12. Encoding over 1,100 genes, chromosome 12 comprises nearly 4.5% of the human genome and is associated with a number of skeletal deformities, including hypochondrogenesis, achondrogenesis and Kniest dysplasia. Chromosome 12 is also home to both a homeobox gene cluster which encodes crucial transcription factors for morphogenesis, and a natural killer complex gene cluster encoding C-type lectin proteins which mediate the NK cell response to MHC I interaction. Additionally, Trisomy 12p (three copies of the p arm of chromosome 12) leads to facial developmental defects, seizure disorders and a host of other symptoms varying in severity depending on the extent of mosaicism.

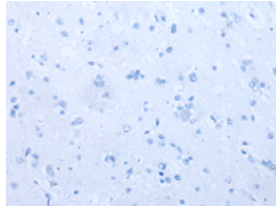
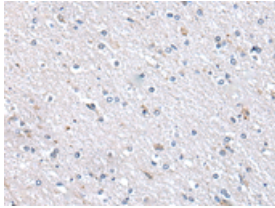
## Applications

### Immunohistochemistry

Predicted cell location: Cytoplasm

Positive control: Human brain

Recommended dilution: 30-150

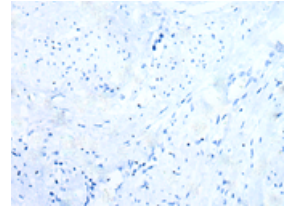
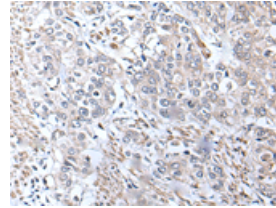


The image on the left is immunohistochemistry of paraffin-embedded Human brain tissue using ml123950(METTL7A Antibody) at dilution 1/40, on the right is treated with fusion protein. (Original magnification:  $\times 200$ )

Predicted cell location: Cytoplasm

Positive control: Human prostate cancer

Recommended dilution: 30-150



The image on the left is immunohistochemistry of paraffin-embedded Human prostate cancer tissue using ml123950(METTL7A Antibody) at dilution 1/40, on the right is treated with fusion protein. (Original magnification:  $\times 200$ )

### ELISA

Recommended dilution: 5000-10000

联系电话: 4008-898-798, 021-61725725

联系QQ: 2881505695, 2881505696

邮箱: [mlbio\\_cn@yeah.net](mailto:mlbio_cn@yeah.net)

网址: [www.mlbio.cn](http://www.mlbio.cn)