

## Anti-USP35 antibody

<b>Cat. No.</b>	ml124192
<b>Package</b>	25 µl/100 µl/200 µl
<b>Storage</b>	-20°C, pH7.4 PBS, 0.05% NaN <sub>3</sub> , 40% Glycerol

### Product overview

<b>Description</b>	Anti-USP35 rabbit polyclonal antibody
<b>Applications</b>	ELISA, IHC
<b>Immunogen</b>	Fusion protein of human USP35
<b>Reactivity</b>	Human
<b>Content</b>	0.9 mg/ml
<b>Host species</b>	Rabbit
<b>Ig class</b>	Immunogen-specific rabbit IgG
<b>Purification</b>	Antigen affinity purification

### Target information

<b>Symbol</b>	USP35
<b>Full name</b>	ubiquitin specific peptidase 35
<b>Synonyms</b>	
<b>Swissprot</b>	Q9P2H5

### Target Background

USP35 (ubiquitin specific peptidase 35) is a 1,017 amino acid protein that belongs to the peptidase C19 family. Expressed in pancreas, testis and skeletal muscle, USP35 functions to catalyze the conversion of a ubiquitin C-terminal thioester and water to free ubiquitin and a thiol, a reaction that may play a role in signaling events throughout the cell.

订购热线: 4008-898-798

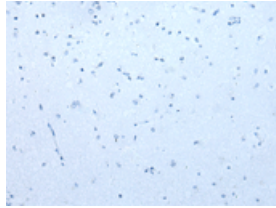
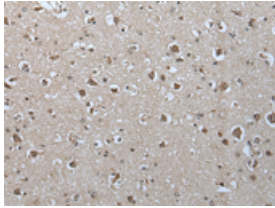
#### Applications

##### Immunohistochemistry

Predicted cell location: Nucleus and Cytoplasm

Positive control: Human brain

Recommended dilution: 40-200



The image on the left is immunohistochemistry of paraffin-embedded Human brain tissue using ml124192(USP35 Antibody) at dilution 1/55, on the right is treated with fusion protein. (Original magnification:  $\times 200$ )

##### ELISA

Recommended dilution: 5000-10000

联系电话: 4008-898-798, 021-61725725

联系QQ: 2881505695, 2881505696

邮箱: [mlbio\\_cn@yeah.net](mailto:mlbio_cn@yeah.net)

网址: [www.mlbio.cn](http://www.mlbio.cn)