

Anti-GKN2 antibody

Cat. No.	ml263004
Package	25 µl/100 µl/200 µl
Storage	-20°C, pH7.4 PBS, 0.05% NaN ₃ , 40% Glycerol

Product overview

Description	Anti-GKN2 rabbit polyclonal antibody
Applications	ELISA, WB
Immunogen	Synthetic peptide of human GKN2
Reactivity	Human
Content	0.8 mg/ml
Host species	Rabbit
Ig class	Immunogen-specific rabbit IgG
Purification	Antigen affinity purification

Target information

Symbol	GKN2
Full name	gastrokine 2
Synonyms	GDDR; TFIZ1; PRO813; BRICD1B; VLT1465
Swissprot	Q86XP6

Target Background

Gastrokine-2 is a putative gastric cancer-specific tumor suppressor gene, the loss of which is known to be involved in the development and progression of gastric cancer, and restoration of gastrokine-2 expression inhibits growth of gastric cancer cells in vitro. However, the underlying mechanism of these effects requires elucidation.

订购热线: 4008-898-798

Applications

Western blotting

Predicted band size: 20 kDa

Positive control: Human stomach tissue lysate

Recommended dilution: 500-2000

Gel: 12% SDS-PAGE

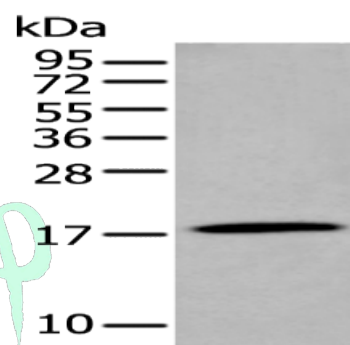
Lysate: 40 µg

Lane: Human stomach tissue lysate

Primary antibody: ml263004 (GKN2 Antibody) at dilution 1/250

Secondary antibody: Goat anti rabbit IgG at 1/8000 dilution

Exposure time: 20 seconds



ELISA

Recommended dilution: 5000-10000

联系电话: 4008-898-798, 021-61725725

联系QQ: 2881505695, 2881505696

邮箱: mlbio_cn@yeah.net

网址: www.mlbio.cn