

## Anti-HNF1A antibody

<b>Cat. No.</b>	ml263698
<b>Package</b>	25 µl/100 µl/200 µl
<b>Storage</b>	-20°C, pH7.4 PBS, 0.05% NaN <sub>3</sub> , 40% Glycerol

### Product overview

<b>Description</b>	Anti-HNF1A rabbit polyclonal antibody
<b>Applications</b>	ELISA, WB
<b>Immunogen</b>	Synthetic peptide of human HNF1A
<b>Reactivity</b>	Human, Mouse, Rat
<b>Content</b>	0.66 mg/ml
<b>Host species</b>	Rabbit
<b>Ig class</b>	Immunogen-specific rabbit IgG
<b>Purification</b>	Antigen affinity purification

### Target information

<b>Symbol</b>	HNF1A
<b>Full name</b>	HNF1 homeobox A
<b>Synonyms</b>	HNF1; LFB1; TCF1; MODY3; TCF-1; HNF-1A; IDDM20
<b>Swissprot</b>	P20823

### Target Background

The protein encoded by this gene is a transcription factor required for the expression of several liver-specific genes. The encoded protein functions as a homodimer and binds to the inverted palindrome 5'-GTTAATNATTAAC-3'. Defects in this gene are a cause of maturity onset diabetes of the young type 3 (MODY3) and also can result in the appearance of hepatic adenomas. Alternative splicing results in multiple transcript variants encoding different isoforms.

订购热线: 4008-898-798

### Applications

#### Western blotting

Predicted band size: 67 kDa

Positive control: 293T, HeLa, HEPG2 and A549 cell lysates

Recommended dilution: 200-1000

Gel: 8%SDS-PAGE

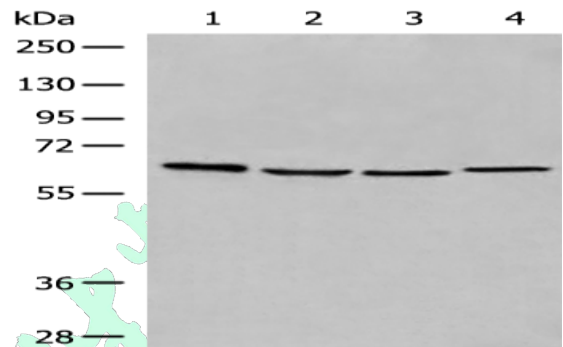
Lysate: 40  $\mu$ g

Lane 1-4: 293T, HeLa, HEPG2 and A549 cell lysates

Primary antibody: ml263698(HNF1A Antibody) at dilution 1/250

Secondary antibody: Goat anti rabbit IgG at 1/8000 dilution

Exposure time: 90 seconds



### ELISA

Recommended dilution: 5000-10000

联系电话: 4008-898-798, 021-61725725

联系QQ: 2881505695, 2881505696

邮箱: [mlbio\\_cn@yeah.net](mailto:mlbio_cn@yeah.net)

网址: [www.mlbio.cn](http://www.mlbio.cn)