

Anti-GIPC1 antibody

Cat. No.	ml263992
Package	25 µl/100 µl/200 µl
Storage	-20°C, pH7.4 PBS, 0.05% NaN ₃ , 40% Glycerol

Product overview

Description	Anti-GIPC1 rabbit polyclonal antibody
Applications	ELISA, WB, IHC
Immunogen	Synthetic peptide of human GIPC1
Reactivity	Human, Mouse, Rat
Content	1.38 mg/ml
Host species	Rabbit
Ig class	Immunogen-specific rabbit IgG
Purification	Antigen affinity purification

Target information

Symbol	GIPC1
Full name	GIPC PDZ domain containing family member 1

Synonyms NIP; GIPC; IIP-1; TIP-2; SEMCAP; C19orf3; Hs.6454; GLUT1CBP; RGS19IP1; SYNECTIN;
SYNECTIIN

Swissprot O14908

Target Background

GIPC1 is a scaffolding protein that regulates cell surface receptor expression and trafficking.

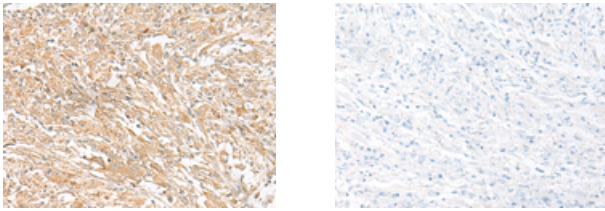
Applications

Immunohistochemistry

Predicted cell location: Cytoplasm

Positive control: Human liver cancer

Recommended dilution: 40-200



The image on the left is immunohistochemistry of paraffin-embedded Human liver cancer tissue using ml263992(GIPC1 Antibody) at dilution 1/50, on the right is treated with synthetic peptide. (Original magnification: $\times 200$)

Western blotting

Predicted band size: 36 kDa

Positive control: Hela cell lysate

Recommended dilution: 500-2000

订购热线: 4008-898-798

Gel: 8%SDS-PAGE

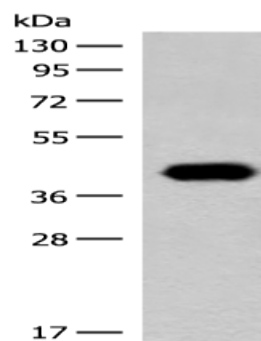
Lysate: 40 μ g

Lane: Hela cell lysate

Primary antibody: ml263992(GIPC1 Antibody) at dilution 1/400

Secondary antibody: Goat anti rabbit IgG at 1/8000 dilution

Exposure time: 1 minute



ELISA

Recommended dilution: 5000-10000

联系电话: 4008-898-798, 021-61725725

联系QQ: 2881505695, 2881505696

邮箱: mlbio_cn@yeah.net

网址: www.mlbio.cn