

兔抗 EML1 多克隆抗体

中文名称：兔抗 EML1 多克隆抗体

英文名称：Anti-EML1 rabbit polyclonal antibody

别名：EMAP like 1; BH; EMAP; ELP79; EMAPL; HuEMAP

相关类别：一抗

储存：冷冻（-20℃）

宿主：Rabbit

抗原：EML1

反应种属：Human, Mouse, Rat

标记物：Unconjugate

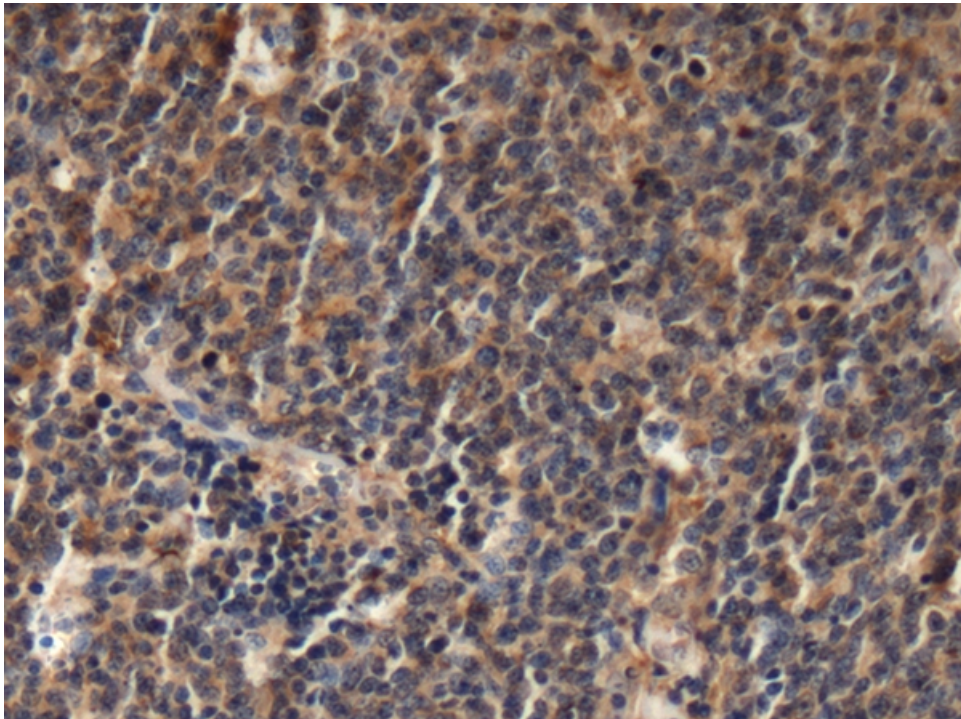
克隆类型：rabbit polyclonal

技术规格

Background:

Human echinoderm microtubule-associated protein-like is a strong candidate for the Usher syndrome type 1A gene. Usher syndromes (USHs) are a group of genetic disorders consisting of congenital deafness, retinitis pigmentosa, and vestibular dysfunction of variable onset and severity depending on the genetic type. The disease process in USHs involves the entire brain and is not limited to the posterior fossa or auditory and visual systems. The USHs are categorized as type I (USH1A, USH1B, USH1C, USH1D, USH1E and USH1F), type II (USH2A and USH2B) and type III (USH3). The type I is t

	he most severe form. Gene loci responsible for these t hree types are all mapped. Two transcript variants enc oding different isoforms have been found for this gen e. [provided by RefSeq, Jul 2008]
Applications:	ELISA, IHC
Name of antibody:	EML1
Immunogen:	Fusion protein of human EML1
Full name:	EMAP like 1
Synonyms:	BH; EMAP; ELP79; EMAPL; HuEMAP
SwissProt:	O00423
ELISA Recommended dilution:	5000-10000
IHC positive control:	Human thyroid cancer
IHC Recommend dilution:	50-200



mlbio 梅联生物
Good elisakit producers